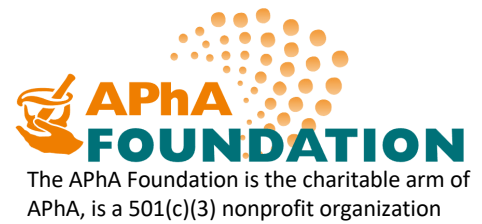
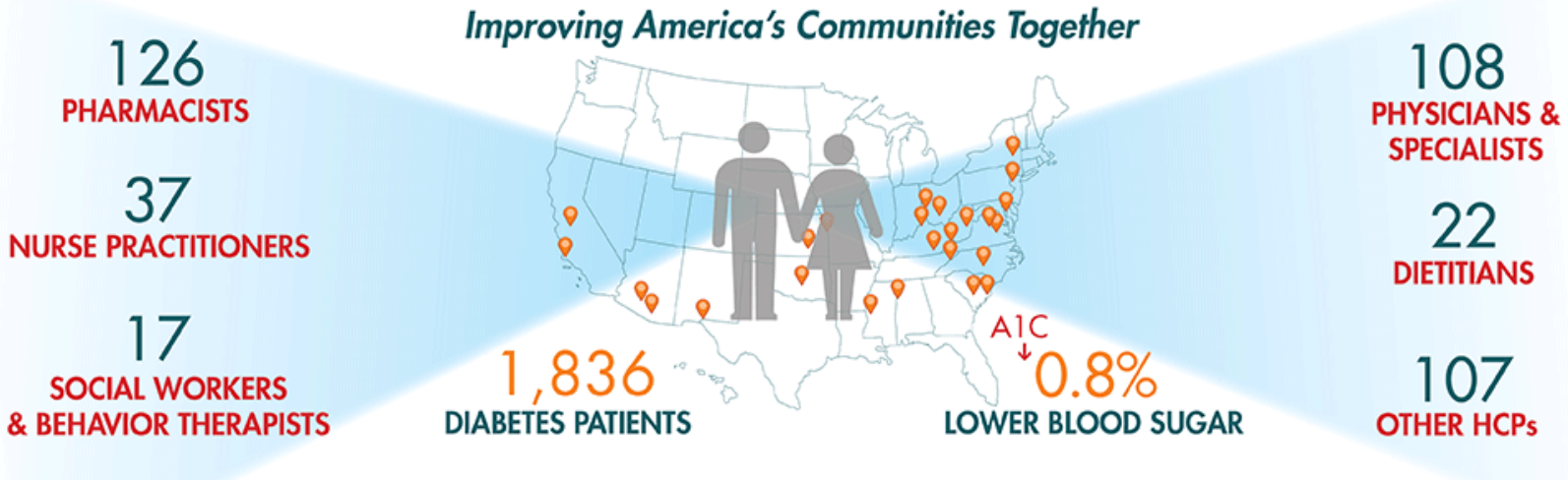


Project IMPACT: Diabetes

Evidence-based study identifying the impact of pharmacists in underserved communities



Pharmacists improving diabetes outcomes in 25 underserved communities



Clinically significant diabetes outcomes:

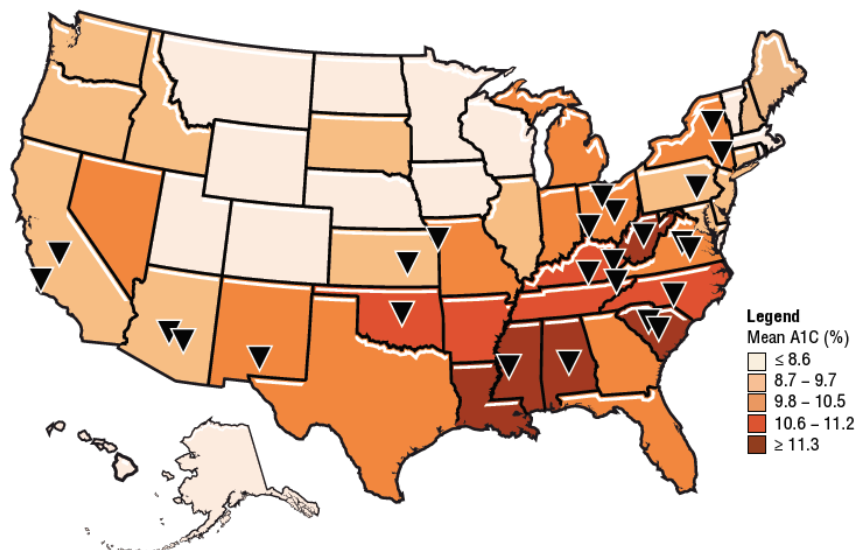
- 0.8% decrease in average long-term blood sugar (A1c) levels

Statistically significant diabetes-related outcomes:

- 7.1 mg/dL decrease in LDL cholesterol
- 23.7 mg/dL decrease in triglycerides
- 8.8 mg/dL decrease in total cholesterol

Integrating pharmacists into local, interdisciplinary teams makes a difference

- Project IMPACT: Diabetes took root in 25 diverse communities in 17 states
- Target patient populations were identified based on:
 - Geographic areas with a high incidence of diabetes
 - Patients with sub-optimal hemoglobin A1c (greater than 7%) and other outcomes
 - Patients with limited access to quality diabetes care
 - Communities with socioeconomic challenges and other factors that impact patient access to care



Hear the stories: <https://www.aphafoundation.org/project-impact-diabetes/communities>

1. Bluml BM, Watson LL, Skelton JB, Manolakis PG, Brock KA. Improving outcomes for diverse populations disproportionately affected by diabetes: final results of Project IMPACT: Diabetes. *J Am Pharm Assoc.* 2014; 54:477-485.

2. Watson LL, Bluml BM. Integrating pharmacists into diverse diabetes care teams: implementation tactics from Project IMPACT: Diabetes. *J Am Pharm Assoc.* 2014; 54:538-541.