



ANNUAL **REPORT** 2016



Mission: Our Core Purpose

To improve health by inspiring philanthropy, research and innovation that advances pharmacists' patient care services

Vision: Our Picture of the Ideal Future

- We are fully aligned with and an integral, value-added part of APhA
- We have a portfolio of exciting and ground-breaking programs
- We make it easy for people to give to and partner with the Foundation and APhA
- We are a lean and highly efficient operation that works seamlessly with APhA
- We have a strong, active Board with the right expertise and reporting structure
- We have an ever growing network of donors who support and invest in APhA programs
- We have stable and enduring funding that positions APhA for the future

Values: What We Stand For

COLLABORATING STRATEGICALLY

- We work together and build partnerships at all levels
- We share objectives and leverage resources across the APhA enterprise
- Together, we are greater than our individual parts

INNOVATING IN A SMART WAY

- We are fun, creative, resourceful catalysts and problem-solvers
- We embrace change and value learning as a means to break new ground
- We are agile and adapt quickly to dynamic changes in the environment

IMPACT THAT LEADS TO REAL TRANSFORMATION

- We are passionate about delivering tangible outcomes that make a positive difference
- We are forward-looking and dedicated to influencing meaningful and enduring change
- We focus on initiatives that deliver the highest value and return on investment

From Your Leadership



Leonard L. Edloe

It is my privilege to hold the mantle of leadership with the commitment of our dedicated Board of Directors, hard-working staff and the support of the APhA Board of Trustees. We proactively respond to the inevitable challenges that arise in the charitable nonprofit world as we serve others.

In 2016 the APhA Foundation Board of Directors carried out a series of actions and changes to strengthen the Foundation. In order to improve our future, both short and long-term, we adopted a new mission statement, method of selecting directors, and organizational structure to optimize our enterprise-wide approach and collaboration with APhA.

I am pleased to report that implementing this plan has helped us achieve many important goals. We have an excellent staff in place. We have rapidly realized operational efficiencies. We are working in a manner that aligns our strategies across the APhA enterprise, and we anticipate making even greater gains in our research and innovation. This has been facilitated by a governance structure of the APhA Foundation Board of Directors and APhA Board of Trustees that optimizes our mutual success while respecting the necessary legal and procedural boundaries.

Your charitable gifts have enabled us to provide incentive grants, student scholarships, internships, and the APhA Executive Residency Program. Through your contributions, we were able to fully endow the Bowl of Hygieia. With your continued support, and the generosity of more of our fellow pharmacists, we plan to keep expanding the scope of this aspect of our mission, endowing even more of our awards.

We are continuing to build on our IMPACT brand and Patient Self-Management Solutions. The new enterprise-wide approach entails coordinated strategy and thoughtful allocation of resources to develop new models of care, conduct research, implement pilot programs, and scaled demonstrations that show the value of pharmacists as integrated members of the health care team, to advance innovation in practice, and lower health care costs.

I encourage you to read this Annual Report. We are committed to keeping you informed of all our efforts. We are proud to report how your philanthropy has been applied to our mission. We remain dedicated to optimizing our operations by constantly evaluating how we do what we do with your donor dollars.

We thank you for being a part of our success and inspiring others to do likewise. As president of **your** APhA Foundation, I thank you for all your support and the opportunity to serve the profession in this role.

Leonard L. Edloe, BSP, M. Div., PharmD, FAPhA



Photo from the 2016 APhA Annual Meeting in Baltimore, Maryland.

The APhA Foundation Thanks and Recognizes the 1953 Society Contributors for 2016

Jennifer Adams
Nancy Alvarez
Tery & Mary Baskin
Benjamin & Elaine Bluml
Cynthia Boyle
Amber Briggs
Kelly Brock
Grant Brown
Daniel Buffington
Tim Canning
Laura Carpenter
Walter Chambliss Jr.
Mark Cziraky
David DeVido
Mary Euler
John & Eileen Gans
Terry Gubbins
Ed & Ann Hamilton

Starlin Haydon-Greatting
William Heath
Dennis Helling
Nicki Hilliard
Susan Holden
Joseph & Jean Janela
Elizabeth Johnson
Emery Johnson
Elizabeth Keyes
Pamela Koss-Justice
Bruce Laughrey
William Letendre Sr.
Albert & Virginia Lockamy
Daniel Luce
Eugene & Susan Lutz
Lucinda Maine
Jonathan & Pamala Marquess
Thomas Menighan
Marsha Millionig

Jerry Moore
Milap Nahata
Matthew & Marilyn Osterhaus
Katherine Petsos
Mitchel Rothholz & Julie Gerhart-Rothholz
Steven & Wendy Simenson
Gary & Diane Smith
Jenelle Sobotka
Dominic Solimando Jr
Theresa Tolle
Troy Trygstad
Timothy & Diane Tucker
Kelly Valente
Eleanor Vogt & James Kuperberg
Debra Weintraub
Pamela Whitmire
Dennis & Patti Worthen
Daniel Zlott

1953 Student Society Contributors

Tamra Boldt
Carla Figura
Kelsea Gallegos
Kelsey Japs

Carson Klug
Jordan Long
Ali Lloyd
Brianna Luft

Jessica Marx
Sarah Schmidt
Jeremy Sparks

2016 APhA Foundation Scholarship Recipients



JOHN A. GANS
SCHOLARSHIP
DREW REGISTER

The University of Louisiana
at Monroe College of
Pharmacy



MARY LOUISE
ANDERSEN
SCHOLARSHIP
ELISSA
LECHTENSTEIN

University of Maryland
School of Pharmacy



SAM KALMAN
SCHOLARSHIP
KAYLA JOYAL

Northeastern University
School of Pharmacy



BOYLE FAMILY
SCHOLARSHIP
JENNER MINTO

The University of Montana
Skaggs School of Pharmacy



MARVIN AND
JOANNEL DYRSTAD
SCHOLARSHIP
ANJOLI PUNJABI

University of Minnesota
College of Pharmacy



PAUL PUMPIAN
SCHOLARSHIP
JARED FRYE

Wingate University
School of Pharmacy



APHA FOUNDATION
SCHOLARSHIP
PARIA SANATY
ZADEH

University of Wisconsin
School of Pharmacy



GLORIA FRANCKE
SCHOLARSHIP
FARIMA FAKHERI
RAOF

Nova Southeastern
University College of
Pharmacy



JUAN AND
ESPERANZA LUNA
SCHOLARSHIP
GINA FU

Shenandoah University
School of Pharmacy



CHARLES C. THOMAS
SCHOLARSHIP
JENNIFER LEVINE

The University of North
Carolina at Chapel Hill
Eshelman School of
Pharmacy



ROBERT D. GIBSON
SCHOLARSHIP
SUSAN LEE

Loma Linda University
School of Pharmacy



MARY MUNSON RUNGE
SCHOLARSHIP
SALEMATOU
TRAORE

University of Maryland
Eastern Shore School of
Pharmacy



GEORGE F.
ARCHAMBAULT
SCHOLARSHIP
KELSEY JAPS

Drake University College of
Pharmacy and Health
Sciences

Incentive Grant Recipients and Committee

Incentive Grants

Incentive grants were awarded to 22 recipients in three categories: student innovation in immunization practices, practitioner innovation in immunization practices, and residents and their preceptors.

The Incentive Grants Program is the Foundation's longest running program and offers pharmacists seed money to implement or support an existing patient care service within their pharmacy practice. Aligned with the Foundation's focus on designing and evaluating new practice models for pharmacy, the core requirement of the Incentive Grants Program is a focus on innovation. The Community Pharmacy Foundation provides matching grant support to fund the APhA Foundation Incentive Grants Program.

Additionally, the Daniel A. Herbert Incentive Grant is awarded annually to a community pharmacy resident or recent pharmacy graduate who is working to expand pharmacy services for which pharmacists are compensated. The 2016 recipient was Katelyn Johnson with Kroger Pharmacy in Cincinnati, OH, who focused on the identification and management of metabolic and movement abnormalities in patients taking antipsychotic medications in a community pharmacy.

Visit: <http://www.aphafoundation.org/2016-Incentive-Grant-Recipients> for the 2016 Incentive Grant recipients and innovative projects.

Student Scholarships

The APhA Foundation Student Scholarship Program recognizes students who choose to invest their time in their school's APhA-ASP chapter to help shape the future of the profession while managing the demands of a full-time pharmacy curriculum. Thirteen scholarships were awarded, twelve of which are named in recognition for individuals or groups who wish to support the development of future leaders within the profession. This year's scholarship recipients were evaluated on their potential to become leaders in the profession, as demonstrated by involvement in school and community activities and academic performance.

Visit: <http://www.aphafoundation.org/student-scholarship-recipients-2016> for the 2016 Student Scholarship recipients.

2016 Dennis and Patricia Worthen APhA-ASP Presidential Award

The Dennis and Patricia Worthen APhA-ASP Presidential Award recognizes the tremendous leadership provided to student pharmacists by the President of APhA-ASP during his or her term in office. In addition, the Award also recognizes the President-elect.

Dennis and Patti Worthen, longtime supporters of the APhA Foundation, have been highly engaged in pharmacy since their college careers. Over a number of

years, the Worthens have attended many pharmacy meetings and made numerous visits to schools of pharmacy. The friendships and insights gained from these experiences led to their mutual decision to establish this award to recognize outstanding student leadership.

2016 Recipients:



APhA-ASP President,
Kelsea Gallegos from
The University of
New Mexico



APhA-ASP President-elect,
Michael Murphy from
The Ohio State University

Carl F. Emswiler Internship in Association Management

The APhA Foundation's summer internship is named in honor of Carl F. Emswiler, a leader in the profession of pharmacy and a pioneer in the areas of pharmaceutical care and collaborative practice. Jewell Emswiler, Carl's wife of 53 years, established this fund to honor Carl's innumerable contributions to pharmacy.

2016 Recipient:



Michael Murphy from
The Ohio State University

Executive Resident

Executive Residency

The APhA Foundation Executive Residency in Association Management & Leadership was established through the APhA Foundation Knowlton Center for Pharmacist-Based Health Solutions. The Executive Residency program trains individuals for leadership positions within the profession and in national, regional, state, and local professional pharmacy and/or other health-related organizations. The Foundation awards the resident a certificate upon satisfactory completion of the residency. This year marks the ninth year of the Executive Residency program.

2016-2017 Executive Resident:

Drew Register, PharmD from The University of Louisiana at Monroe, Monroe, LA



Drew Register

“As a student pharmacist, I knew I wanted to pursue a residency that would offer me the opportunity to impact the profession at a national

level. The APhA Foundation Executive Residency has afforded me that exact experience and much more. Working with some of the brightest innovators and leaders in the profession, I’ve had the opportunity to help shape policies that will ultimately drive our profession into the next era of pharmacy practice. Serving as the Executive Resident has shown me the crucial role associations play in improving medication use and advancing patient and public health.”

Research and Innovation...IMPACT for the Patient

With the help of our corporate sponsors, the APhA Foundation imagines, designs, implements, evaluates, and communicates about innovative patient-centered, team-based care models that improve patients' health (www.APhAFoundation.org).

- Through a partnership with Sanofi, the APhA Foundation continued its important work in 2016 with Patient Self-Management Credentialing (PSMC), an initiative that expanded the use and reach of its provider-mediated, patient empowerment PSMC resources for diabetes and cardiovascular health.
- The Project IMPACT: Immunizations Pilot, with corporate support from Merck & Co., Inc., enabled the APhA Foundation to imagine and evaluate what might be possible if pharmacists are armed with access to a bidirectional immunization information system at the point-of-care, utilizing influenza vaccinations as a vector to assess patients' vaccination histories, identify unmet needs, educate, and address ACIP guidelines to improve public health. Eight community pharmacy practice sites were selected in communities throughout Washington State: Belfair, Cheney, Eatonville, Edmonds, Lopez Island, Seattle, Spokane, and Yakima. Partners also included Scientific Technologies Corporation, Washington State Pharmacists Association, and the Washington State Department of Health. Invited presentations about the initiative were made at the American Immunization Registry Association in April and the American Public Health Association in October.
- In June, with support from Sanofi Biosurgery, the APhA Foundation convened an interprofessional expert panel of thought leaders to discuss how pharmacists can work together with patients and other health care providers to design optimal processes for proper medication use and therapy associated with osteoarthritis and chronic pain. The resulting white paper outlines best practices and principles that can contribute to the transformation of osteoarthritis and chronic pain management in the health care delivery system.
- Through experience, evidence, and stakeholder input, the APhA Foundation, in conjunction with Sanofi, believed it was important to convene a Consensus Consortium on Patient Self-Management Credentialing and Value-Based Health



Benefit Design Considerations in Patient-Centered, Team-Based Care to create a set of principles to guide health care system stakeholders in making value-based health benefit design decisions for people with challenging and complex chronic conditions such as diabetes, hypertension, dyslipidemia, and others. The Consortium convened on December 1, and based on input from the 18 participants, key principles that could IMPACT effective health care system changes and improve patient outcomes are as follows:

Inspire patients, providers, and payers to transform the health care system.

Make the patient the center of all health care decisions.

Promote access to evidence and information that elevates clinical decision making.

Align the incentives for patients, providers, and payers.

Cultivate quality improvement and practice enhancement.

Take accountability for the financial, clinical, and humanistic outcomes of patient medication use.

- Imagine the possibilities if pharmacists were able to integrate new technologies for 3D printing with pharmacogenomics to enable point-of-care production of medications customized for patients based on their genome and individual needs. In November, the APhA Foundation began an initiative with key industry representatives to explore, implement, and evaluate doing just that!

2016 Jacob W. Miller Award



Daniel Garrett,
BSPHarm, MS, FASHP

The Jacob W. Miller Award is named for APhA and APhA Foundation Former President Jake Miller in honor of his leadership and dedicated service to the APhA Foundation. This award recognizes an individual who, like President Miller, has advanced the mission of the APhA Foundation through any or all of the following: active involvement in the programs of the APhA Foundation; exemplary support in helping establish and/or maintain the APhA Foundation initiatives; and outstanding leadership in carrying out the mission of the APhA Foundation. The Jacob W. Miller Award was established through a founding grant from Wyeth, now Pfizer.

Daniel Garrett, BSPHarm, MS, FASHP

Daniel Garrett is Chief Trailblazer of the Blue Ridge Mountain Group LLC, a consulting group focused on helping others find their own way by engaging the spirit and creativity of individuals, organizations and communities. The organization develops shared leadership and management systems to benefit organizations and those they serve.

A hospital pharmacy director for over 20 years, Dan facilitated the original Asheville Project and then worked nationally with the APhA Foundation to replicate it as the Patient Self-Management Program and the Diabetes Ten City Challenge. He serves as Board Chair for Homeward Bound, Liberty Corner Enterprises and Health Partners to help end homelessness, support people with developmental disabilities, and serve health care to the uninsured in his community. His previous positions include Vice President of Health Care Programs at American Health Care and Executive Director of the North Carolina Association of Pharmacists.

Pinnacle Award Honorees

The annual Pinnacle Awards celebrate significant contributions to the medication use process. Recipients demonstrate pioneering, innovative ways to improve pharmaceutical systems, with particular emphasis on improving the medication use process in a way that increases patient adherence, promotes the use of national treatment guidelines, improves patient outcomes, and enhances communications among all members of the health care team. The 2016 recipients were recognized at a special ceremony and reception at APhA Headquarters on September 19, 2016. The APhA Foundation was honored to congratulate the 2016 Pinnacle Award recipients.

The award honors individuals and organizations in three categories:



Category I: 2016 Individual Award for Career Achievement

James M. Hoffman,
PharmD, MS, BCPS, FASHP

Dr. Hoffman is a member of the St. Jude faculty and clinical staff, with his appointment based in the Pharmaceutical Department. He has emerged as a senior leader within the St. Jude clinical staff, currently serving as the Chief Patient Safety Officer for St. Jude Children's Research Hospital (SJCRH). Dr. Hoffman earned both his undergraduate and doctoral degrees from the Philadelphia College of Pharmacy at the University of the Sciences in Philadelphia. In 2014, he was recognized as young alumnus of the year by the University of the Sciences. He earned his MS degree at the University of Wisconsin-Madison, completed

postgraduate training at the University of Wisconsin Hospital and Clinics, and is also a board certified pharmacotherapy specialist (BCPS). Dr. Hoffman was recruited to SJCRH in 2004. He has made a profound impact since joining, significantly enhancing the care that patients receive and the role that his department plays in the care of children with cancer, sickle cell, HIV, and other potentially devastating diseases. His primary interests include patient safety event detection, clinical decision support, and the clinical implementation of pharmacogenetics. Dr. Hoffman is an investigator on PG4KDS (www.stjude.org/pg4kds), which is St. Jude's prospective clinical trial to optimize the processes required to successfully implement preemptive pharmacogenomics for "precision medicine." In addition, he has been a member of the global Clinical Pharmacogenomics Implementation Consortium (CPIC) since its inception. Dr. Hoffman's influence has extended well beyond clinics and inpatient units, as his many accomplishments, including teaching, professional organizational work, mentoring, and publications have impacted the care of children worldwide.



Category II: 2016 Group Practice-Health System-Corporation Award

Kelley-Ross Pharmacy Group

Kelley-Ross Pharmacy Group embodies the vision to continually improve quality of care and medication use. Guided by the principal to help people live better lives, and creating a culture that empowers its pharmacists to be leaders and practice at the top of their license, the company has launched a number of "first ever" innovations in the profession that contribute to changing the face of pharmacy. There are four core areas where the company focuses its efforts to improve quality of care and medication use processes: direct patient care, harm reduction, research, and expanding pharmacy practice. Kelley-Ross Pharmacy Group prides itself on engaging as

a partner in the continuum of care from innovative services to improved processes. Its innovations are unleashing the power of the pharmacist to solve problems and improve outcomes. Dramatically impacting the delivery of health care in communities, these innovations have caught the attention of both local and trade media. In the past six months, Kelley-Ross Pharmacy Group has appeared on every local broadcast station in the Seattle metro area as an expert on a number of pharmacy issues. Its in-home care, One Step PrEP, and naloxone training efforts have also been extensively covered by a media audience of more than 2.5 million since November 2015.



Category III: 2016 Government Agency- Nonprofit Organization- Association Award

United States Department of Health and Human Services

As the principal impact measurement arm of the Department of Health and Human Services (HHS) Partnership for Patients initiative, the Agency for Healthcare Research and Quality

(AHRQ) established that there were 2.1 million fewer incidents of patient harm in 2011, 2012, 2013, and 2014 in comparison to the 2010 base year, including a dramatic 40% reduction in Adverse Drug Events (ADE), the largest single category of hospital harm. These impressive national results were driven by an aligned, collaborative, synergistic set of federal and private sector initiatives. The Federal interagency partnership included active participation from AHRQ, the Centers for Medicare & Medicaid Services (CMS), the Veterans Administration (VA), the Centers for Disease Control and Prevention (CDC), the Health Resources and Services Administration (HRSA), the Administration for Community Living (ACL), the Indian Health Service (IHS), the Office of the National Coordinator (ONC) for Health Information Technology, the Office of the Assistant Secretary for Health (OASH), with frequent participation and representation from the Food and Drug Administration (FDA), the Department of Defense (DoD), patients, national association partners, frontline caregivers, hospital partners, universities, and others. A number of key initiatives were at the "center of the action" that drove national progress, including:

- AHRQ's National Scorecard for tracking national progress on ADEs and 20 other forms of patient harm
- CMS Quality Improvement Organization (QIO) program

work in both the 10th and 11th Scopes of Work

- HHS National Action Plan for ADE Prevention
- HHS Partnership for Patients initiative and the CMS-supported Hospital Engagement Networks (HENs)
- HRSA's Patient Safety and Clinical Pharmacy Services Collaborative

Each of these key national initiatives worked together with frontline pharmacists, physicians, nurses, and other caregivers to generate the substantial reductions in adverse drug events that have been documented now by the AHRQ National Scorecard for the period 2011 through 2014.

APhA 2016 Annual Meeting

In March 2016, our supporters from all over the country traveled to Baltimore, Maryland for the 2016 APhA Annual Meeting and Exposition. The APhA Annual Meeting provided an excellent opportunity for the Foundation to connect with supporters and donors from all across the country.



Bowl of Hygeia Reception



5K Fun Run/Walk



Women in Pharmacy Mix, Mingle and Margaritas



Wine Tasting and Silent Auction

Contributors' Breakfast



APhA Foundation BOARD OF DIRECTORS 2016-2017



PRESIDENT
Leonard L. Edloe
Mechanicsville, VA

VICE PRESIDENT
Troy Trygstad
Chapel Hill, NC

TREASURER
Tim Canning
Cincinnati, OH

SECRETARY
Tom Menighan
Washington, DC

Laura Carpenter
Phoenix, AZ

Ed Hamilton
Lake Alfred, FL

Jerry Moore
Indian Springs, AL

Steven Simenson
Ramsey, MN

Megan Tucker
Washington, DC

Kelly Valente
Middletown, RI

Eleanor Vogt
San Francisco, CA

APhA Foundation Staff

Elizabeth K. Keyes
Executive Director

Benjamin Bluml
Senior Vice President of Research
and Innovation

Allison Gross
Senior Manager, Development
Communications and Contributor
Relations

Patricia Massenberg
Senior Administrative Manager

Mary McMahon
Director of Development

Drew Register
Executive Resident

Parisa Vatanka
Project Development Manager



Contributor

Ian Dilley

Ian Dilley is attending Purdue University College of Pharmacy pursuing a Doctorate of Pharmacy and due to graduate in May 2018. Growing up with a grandfather with health issues inspired him to pursue a career in pharmacy. As a student pharmacy leader, Ian has been involved in various leadership positions within the APhA Academy of Student Pharmacists (APhA-ASP), including serving as president of his local chapter of APhA-ASP at Purdue University. As an aspiring pharmacy leader, Ian's support of the APhA Foundation stems from his desire to support fellow student pharmacists and the profession at large.

"I know that we student pharmacists are all working for the same purpose," Ian said. "For a nominal donation to the APhA Foundation's Student 1953 Society (\$19.53), students can help fund groundbreaking disease research that can shape the future of pharmacy."

2016 Donors

Amjad Abukwaik	Anthony Ball	Peter Boldingh
Academy of Managed Care Pharmacy	Ingrid Baramki	Tamra Boldt
American Collage of Clinical Pharmacy	Sarah Barden	Frederick Bonchosky
Patricia Achoe	Brenda Barnes	Cynthia Boyle
Paul Ackerman	Felecia Barnes	Amber Brackett
Deborah Adams	Janie Barnes	Jack Bradberry
Jennifer Adams	Lawrence Barnes	Emma Braddock
Abimbola Adebowale	Melvin Baron	Rochelle Braun
Ahmad Adhami	Tim Barrick	Morgan Brauner
Lucy Adkins	Donna Barrio	Jeffery Bray
Sondra Adkinson	Stephanie Barrus	Gayle Brazeau
Emily Akilov	Susan Bartlemay	Ashley Brehme
Kani Al Talabani	Mary & Tery Baskin**	Karen Breitenbach
Rob Alarapow	Gurpartap Basrai	James Bresette
Albany College of Pharmacy and Health Sciences - Albany	Andrew Bath	Paul Bricker
Getenet Alebachew	Vijay Bathija	Amber Briggs
Elena Almada-Quijada	Mary Baxter	Stan Britten
Kevin Aloysius	Laura Beall	Kelly Brock
Jacqueline Alvarez	Michelle Beall	Alfred Bromm Jr.
Joan Alvarez	Stuart Beatty	Jeffrey Brommer
Nancy Alvarez**	Joseph Bechtel	Robert Brooks
Eilaf Alwahab	Edward Bednarczyk	Charles Broussar
Donna Alyau	Jana Behrens	Grant Brown
Jenny Van Amburgh	Allan Bell	Lawrence** & May Brown
American College of Apothecaries	Leslie Benet	Teresa Bruce
American Pharmacists Association	Jon & Marialice Bennett	Charles Brumer
Amgen	Steven Benson	Kristie Bruneman
Michael Anderson	Remi Benzaken	Marilia Brunet-Romero
Susan Anding	Carlo Berardi	Lawrence Buchner
Dirk Andrepont	Rosemary Berardi	Robert Buck
Dustin Andrews	Joni Berry	Donald Budden
Ann Angle	Donald Bertram	Daniel Buffington**
Henry Armbruster	Lina Bertuzis	BulaLaw
John Armitstead	Avinash Bhatia	Kristine Burchard
Vibhuti Arya	Lisa Bible	Philip Burgess
Frank Ascione	Bruce Biundo	Ryan Burke
Keith Ashby	Baeteena Black	Anne Burns
AstraZeneca	Alvin Blackmon III	Kenneth Bykowski
Sam Augustine	Philip Blaine	Andrew Bzowycykj
RoseMarie Babbitt	Erin Blair	Gea Caballero
Steve Bacon	Mal Blair	Richard Caballero
Jeffrey Baldwin	Benjamin & Elaine Bluml	Ben Calcaterra
	BMS Foundation	Larry Calemine
	Boehringer Ingelheim Pharmaceuticals	Kathryn Calhoun
	Virginia Bohmer	McKenzie Calhoun

California Health
Sciences University
APhA-ASP
Jerry Callahan
Mary & Norman Campbell
Catherine Canham
Tim Canning*
Maygen Cardona
Lindsey Cardosi
Michelle Carey
Raymond Carlson
Carol Carnahan
Laura Carpenter*
Jennifer Carroll
Kristina Carter
Valentino Caruso II
Joseph Casacchia
Azure Cassidy
Christian Castro
Jason Cavalier
Amanda Cavness
Josephine &
Natalie Certo
Ashley Cha
Walter Chambliss Jr.
Charles Chang
Ross Chang
Fiona Chao
Anna Chaparyan
Christopher Chapman
Hing Char
Fidelity Charitable
Matt Chen
Sarah Chi
Edmond Chin
Andrew Chiras
Anna Chmielewska
Kenneth Christianson
Windy Christner
Matthew Ciavarella
Michael Cinque
Ashley Clark
Jennifer Clark
Cheryl Clarke
Patrick Clay
Denise Clayton
Carmen Clelland
Jennifer Close
R David Cobb

Fredric Cohen
Megan Coleman
Kathleen Collier
Timothy Colyer
Community Pharmacy
Foundation
Collin Conway
Michele Cooper
Micah Cost
Jean Cottrell
Kenneth Couch
Susan Couch
Katerina Coumbos
Jean Courson
Sammie Craven III
Karen Cree
Kimberly Croley
Sandra Crooks
Rebecca Culbertson
Bethany Cunningham
Rebecca Cupp
Jay Currie
Mark Cziraky
Dade County
Pharmacy Association
Chau Dang
Tracey Daniels
Lyle Dauner
Benjamin Davies
Jennifer Davis
Robert Davis
Ryan Davis
Anthony &
Sophia De Monte
Gratia Deane
Larry Delgado
Joe Delk
Kim Demers
Sharon Denton
Allegra DePietro
Nelson Der
Ricardo Deras
Sarah Derr
Patrice DeSalvo
Rhandin DeSantis
Edward DeSimone II
David DeVido
Lisa Deziel
Robert DiCenzo**

Tiffany Diemer
Yvonne Dietrich
Amie Jo Digatono
Joseph DiPiro
Michel Disco
Donna Dockter
Julie Dee Dodson
Brian Donahue
Andy Donnelly &
Janet Engle
Edward Doyle III
Elizabeth Dragatsi
Charles Dragovich
Lina Drillman
Daniel Driver
Tak's Drug
Tommy Duncan
Kati Dvorak
James Dvorsky
Marvin Dyrstad
Johnnie Early II
Fred Eckel
Kathleen Eddy
Leonard Edloe*
Marilyn Eelkema
Darlington Egbu
Jad Eid
Akoaya Ekukanju
Michael Elliott
Samantha Ellis
Betsy Elswick
Gordon Engel
Janet Engle &
Andy Donnelly
Jeffrey Erwin
Mary Euler
Cecilia Ezeani-Obijuru
Cecilia Faggioli
Allen Fann
Michelle Farrell
Sharon &
William Fassett
Donald Fellows
Rogelio Fernandez
Bruce Field
Carla Figura
Ben Finch
Brian Fingerson
Rebecca Finley



Contributor

Dr. Leonard Edloe
President, APhA
Foundation, Board of
Directors

Each day, I am more inspired by the commitment of our supporters. As the current President of the APhA Foundation and an APhA Foundation board member for the past five years, I know that our success could not be possible without all of you – our supporters that give their time and resources. Your philanthropy enables us to support awards and grant programs, recognize future leaders of the profession, and transform pharmacy practices.



Contributor

Megan Tucker

Managing
Director, Reservoir
Communications Group

For the past three years, I've had the honor of serving on the APhA Foundation Board of Directors. While unfamiliar with the organization until shortly before joining, I have been constantly amazed at the work being done to improve health through philanthropy, research and innovation that advance pharmacists' patient care services. Pharmacists are in every community and are arguably our most accessible health care providers. And their role as medication experts can positively impact our health and well-being in so many ways. Join me in supporting the APhA Foundation to help grow the investment we need to innovate the practices that pharmacists lead on the front lines. Visit www.aphafoundation.org.

Steve Firman	Julian Graubart	Douglas & Katherine Hillblom
David Fogle	Warren Gray	Nicki Hilliard
Diane Fonner	Benjamin Greathouse	Rose Hilmara
John Forbes	Michelle Greer	Jeffrey Hines
Christine Ford	Dana Griess	Jessica Hinson
Barrie & Stephan Foster	Kimberley Griffith	Karen Hoang
Knowlton Foundation	Benjamin Gruda	Ann Hobel
Gregory Fox**	GSL Solutions Inc.	Linda Hoch
Suzanne Francis	Terry Gubbins	Thomas Hoey
Xavier Francis	Pamela Gumbs	Steven Hogel
Stacey Frede	Karen Gunning	Vicky Hoggatt
Heather Free	Rashmi Gupta	Heather & Michael Hogue
Friends of Pharmacy in Florida	Alicia Hager	Susan Holden
Clive Fuller	Seena & Stuart Haines	Sheldon Holstad
Daniel Furtado	Felicia Hairston	Ronnie Holuby
Kate Gainer	Alfred Hall	Aliyah Horton
Linda Gaine	Eric Hall	Brian Hose
Tim Gallagher	Richard Halter	HouseCalls Pharmacists
Kelsea Gallegos**	Wendy Hamamoto	Elizabeth Houston
John Gamble	John Hambright	Amy Kruger Howard
Laurella Ganey	Ann & Ed Hamilton*	Liz Howarth
Violette Ganoe	John Hammond	Maclay Hoyne
Eileen & John Gans	Heather Hancock	Tzu-chi Hsu
Laura Gansen	Stephen Handelman	William Huang
Bianca Garcia	Judith Sommers Hanson	Catherine Hudek
Loni Garcia	William Harbester	Jenna Hughes
Sandra Garrett	Carole Hardin-Oliver	Jessica Hull
William Garst	Mackenzie Harrell	Paul Huntzinger
Richard Gates	Richard Harrell	Robin Hyman
Fred & Nicole Gattas	Betty Jean Harris	Brian Idstein
Tawnia Gaylor	Lindi Harris	IGive.com
Auburn Gehle	Nancy Hart	Julia Ihlenfeldt
Julie Gerhart-Rothholz & Mitch Rothholz	Tom Van Hassel	Barbara Ingram
Sharon Germann	Starlin Haydon-Greatting	Brian Isetts
Kaeley Gerstle	Cardinal Health	Timothy Ives
Lisa Gibbs	William Heath	Brian Jackson
Linda & Robert Gibson	Barry Hecht	Michael Jackson
Brittany Gillen	Adam Heiermann	Fahimeh Jahanazad
Ellen Gladd	Dennis Helling**	Jean & Joseph Janela
Pamela Glemboski	Heather Hellwig	Kelsey Japs
Harold Godwin	Metta Lou Henderson	Eric Jarvi
Jean-Venable "Kelly" Goode**	Carl Hendricks	Sarah Parnapy Jawaaid
Dorothy Gourley	Lise Hennick	Sean Jeffery
John Grabenstein	Kelsey Hennig	Jeff Jellin
Jenni Grantham	Ashley Henrickson	Florence Jello
Tina Grapentine	Michelle Higgins	Michele Jenson

Miyen Joa	Pamela Koss-Justice	Lyudmyla Lyashenko
Deborah Johnson	Mark Krueger	Linda Garrelts
Elizabeth Johnson	Julie Kuhle	MacLean**
Emery Johnson	Catherine Kuhn	James Main Sr.
Glendolynn Johnson	Carol Kulaga	Lucinda Maine
Katelyn Johnson	Kofi Kumi	Monali Majmudar
Michelle Johnson	James Kuperberg & Eleanor Vogt*	Henri Manasse Jr.
Paulette Johnson	Patricia Kwok-Rudolph	Maria Maniscalco
Terry Johnson	Megan Lail	Patti Manolakis
Marie Johnston	Winnie Landis	Kaywan Mansubi
Duane Jones	Roudabeh Latifpour	Maria Mantione
Jerri Jones-Cruz & Jeri Sias	Bruce Laughrey	Keith & Macary Marciniak
Karen & Ronald Jordan	Frank Lavinio	Etella Marcovici
Thomas Jordan	Modinat Lawal	Ruth Marietta
Evelyn Joseph	Cherokee Layson-Wolf	Jonathan & Pamala Marquess
Randy Juhl	Phuong Le	Kimberly Marshall
Da-Hae Jun	Mackenzie Leal	Beth Martin
Gary & Marie Kadlec	Kresta & Sandra Leal	Bruce Martin
Holly Kampenga	Elissa Lechtenstein	Kevin Martin
Soraya Kanakis	David & Judy Lee	Lawrence Martin
Michael Kaplan	Hyungsuk (James) Lee	Marisol Martinez
Sorin Kazangian	Jeannie Lee	Michael Martz
William Kearney	Jonathan Lee	Jessica Marx
Christopher Kelb	Lisa Lee	Gene Mason
Jordan Kelley	Michelle Leffler	Nancy Mason
Brett Kelly	DeAnna & Neil Leikach	Massachusetts Pharmacists Association
Barbara Kemp	Aaron Lengel	Patricia Massenberg
Amy Kennedy	Michele Lennox	Jacenta Matthews
LeAnne Kennedy & Leif Holm	Paul Leoni	Ann Maxwell
Karen Kern	Norman Leshan	Jason Mayes
John Kessinger III	William Letendre Sr.	Martha Mazak
Elizabeth Keyes	Genevieve Levans	Kevin McCaughin
Gordon Kile	Lauren Leydon	Bryan McCullough
Damion Killsback	Paul Limberis	Jessica McDaniel
Jason Kim	Patricia Lind	Marsha McDonald
Ann Kirby	David Line	Cathy McFalls
Duane & Marilyn Kirking	June Ling	Joseph McGlothlin
Andrea Kjos	Douglas & Julie Lobdell	Vicki McIver
Mary Ann Kliethermes	Albert Lockamy Jr.	Bill McLaughlin
Wm. Kloesel	Virginia Lockamy	Mary McMahan
Carson Klug	Tiffany Loder	Kenricka McSweeney
Horace Knight	Jordan Long	Megan Meehan
Janice Knight-Cooper	Vivian Loveless	Bella Mehta
Calvin Knowlton	Timothy Lucas	Zoraida Melendez
Jeffrey Kolo	Daniel Luce	Thomas Menighan* **
Brian Komoto	Brianna Luft	Edgardo Mercadante
	Eugene & Susan Lutz	



Contributor

Mike Heath

Chair - Flagpole Memorial Campaign

Mike Heath is current Chair of the APhA Flagpole Memorial Campaign. Heath, a veteran himself, joined the Army in 1975 and finished his career as the Chief Pharmacist for the Army before retiring in 2005. He is determined to honor veterans who have served during any of the armed conflicts in our nation's history. The APhA Flagpole Memorial recognizes and honors pharmacists and pharmacy technicians who have served in the Armed Forces, U.S. Public Health Service and the Department of Veterans Affairs from the Revolutionary War to the Persian Gulf wars.

Mike is leading the effort to raise the funds needed to update the APhA Flagpole Memorial to include those who served during Operation Enduring Freedom and Operation Iraqi Freedom (conflicts in Afghanistan and Iraq, respectively).



Contributor

Lawrence "L.B." Brown

Associate Dean of Student Affairs at the Chapman University School of Pharmacy

Lawrence "L.B." Brown is the former President of APhA and the current Associate Dean of Student Affairs at the Chapman University School of Pharmacy. Brown has had a successful career, and he points to one individual in particular as the role model that helped him achieve success in his chosen profession: Mary Munson Runge, APhA's first woman and African-American President. Runge's impact on Brown was so great that Brown, with help from fellow California pharmacists Wilma Wong, Glen Yokoyama, and George Yatsuzake, decided to start the Mary Munson Runge Scholarship which issues funds every year to an APhA Academy of Student Pharmacists ("APhA-ASP") member. As the recipient of a PhD, PharmD and FAPhA, Brown understood the hardships that students might endure due to a lack of funds. Brown sees this scholarship as a way to make an impact, however big or small, on the life of an aspiring pharmacist. Visit the APhA Foundation website to donate to the Mary Munson Runge Scholarship and to the other APhA Foundation scholarships.

Merck & Co., Inc.	Luis Natividad-Duarte	Vernon Peterson
Merck Foundation	Roseann Neatrour	Jennifer Petroske
Jennifer Meurer	Jeffrey Neigh	Katherine Petsos
Alicia Kerry Mica	Cathy Neuman	Pfizer
Kyra Michalski	Minh Ngo	PhRMA Foundation
Gary Milavetz	Ijeoma Nnani	Bryan Piccirillo
Mary Teresi Milavetz	Kamala Nola	Yolene Pierre
Erica Milkovich	Elizabeth Nolan	Adele Pietrantonio
Catherine Millares-Sipin	Gwen Norheim	Mark Pilkington
Brooke Miller	Craig Norman	PILLS
Danielle Miller	Staci-Marie Norman	Pamela Piotrowski
Jule Miller	Ronald Nosek Jr.	Hazel Pipkin
Susan Miller	Novo Nordisk	Leslie Pires
Marsha Millionig	Kristen Nuckles	Gina Pitz
Kathryn Mims	Chinonye Nwaokemeleh	Lourdes Planas
Judith Minogue	Annalee Nystrom	Renee Popovich
Miriam Mobley Smith	Ann Oberg	Brianne Porter
Fatemeh Mohammadi	Valerie Oji	Johanna Potter
Leslie Mohler	Ronald Okamura	Patrick Potter
Mahdieh Monfared	Oklahoma Pharmacists Helping Pharmacists/ SWPRN	Mary Powell
Jacqueline Montoya	Angela Olenik	Ben Prewitt
Ashley Moody	Anthony Olson	Kimberly Proffer
Jerry Moore*	Oncology Pharmacy Services, Inc.	Anthony Pudlo
Terri Moore	Christy Onody	James Pufpaff
Anne Moorman	Emily Onyekwelu	Ashley Pugh
Andrea Morales	Maria Osborne	Mark Pulido & Donna Walker
Milagros Morales	Marilyn & Matthew Osterhaus	Pulido Walker Foundation
Aaron Morris	Ann & Robert Osterhaus	Mary Ellen Pumper
Ryan Morris	Glenn Otterman Jr.	Ghanshyam Purohit
Cortney Geoff Mospan	Claudette Oyeku	Michael Pursel
Stephanie Moss	PACE Alliance	Sarah Quigley
Carol Motycka	Rosamond Pappy	Christina Quimby
Liseli Mulala	Syble Paris	Stephen Rabe
Joseph Mulato	Ryan Patrick	Kimberly Rains
Sandra Mullen	Stephanie Paul	Tomas Ramirez
Stephen Mullenix	Charles Paulsen	James Ramseth
Liza Muniz	Eric Paulsen	Manoj Rath
Ellen Munro	Daphne Pearson	Carol Reagan
Richard Muringer	Linda Pedersen	Andrew Rector
Edwin Murphy	Alina Pellot-Aviles	Doreen Reed
Jacqueline Murphy	Nicholas Perez	Karen Reed
Kevin Musto	Christine Perry	C.E. (Gene) Reeder
Megan Myers	Geoffrey Pesanka	Teresa Regis
Brenda Nagel	Shannon Peter	Angela Reimers
Karen Nagel-Edwards	David Peters	Jeffrey Reitz
Milap Nahata		Camille Reliford
National Association of Nuclear Pharmacies		Renaissance Charitable

Foundation
Lois Reynolds
Rhode Island Pharmacy
Foundation
Jennifer Rhodes
Gary Rice
Margaret Rice
Robert Richardson
William Riffiee
Michelle Rigby
Monica Rivera
Neftali Lopez Rivera
Nayda Rivera
Alan Roach
Kimberly Robbins
Janet Robertson
Patrick Tim Rocafort
Edward Roche
Jeffrey Rochon
Jennifer Rodis
Evelyn Rodriguez
Magaly Rodriguez
De Bittner
Ratna Roman
Hong-Mai Rongerude
Sandra Rosa &
Jeffrey Warnken
Ivonne Rosario
Rosemary Rosdahl
Tayla Rose
Sally Ross
Mitchel Rothholz &
Julie Gerhart-Rothholz
Michael Rothstein
John Rovers
Janelle Ruisinger
Oliver Ruiz
Martha Rumore
Cynthia Russell
Elizabeth Ryan
Bahar Sadiq
Sharonjit Sagoo
Rosalie Sagraves
James Sanders
Thomas Sanders
Steven Sandoz
Sanofi
Sanofi Biosurgery
Lynette Sappe-Watkins

Malwina Sarnas
Robert Satterthwaite
Cathleen Sbur
James Schiffer
Sarah Schmidt
Michael Schuh
John Schulte III
Denise Schultz
Preyachat Schultz
Beverly Schulz
Thomas Schumm
Virginia Scott
Karen Scoullous
Eric Seda
Joan Seif
Jennifer Seifert
Deanna Seiler
Nancy Selby
Ira Selig
Larry Selkow
Anne-Marie Sesti
James Shackelford
Jamie Shaddon
Rina Shah
Eric Shalita
Jeffrey Shapiro
Barry Shen
John Shepherd
Peggy Shih
Allie Shipman
Kristin Showen
Jeri Sias &
Jerri Jones-Cruz
Siok-Hiok Siau
Carmela Silvestri
Steven* &
Wendy Simenson
Adrienne Simmons
Deborah Simmons
Manina Singh
Brittane Sisko
Irwin Sitkoff
Jann Skelton
Maryann Skrabal
Marion Slack
Jennifer Sliwa
Kim Sloca
Amy Smendik
Carl Smith

Donald Smith
Diane & Gary Smith
Kelee Smith
Mindy Smith
Cindi Smith-Dunham
Rebecca &
Robert Snead
Jenelle Sobotka
Olubusola Sokale
Dominic Solimando Jr.
Todd Sorensen
Ralph & Rebecca Sorrell
Sarah Sorum
Fibisola Sorunke
Jeremy Sparks
John Spear
Nikola Spegar
John Spilker
Sheri Sponsler
Rachel Stafford
Pamela Stamm
Robert Stanton
Maria Stantynos
Sharon Staton
Condit Steil
Mark Stein
Jennifer Stephens
Susan Sternfeld
Rod Stickrath
Sean Stiffler
Marci Strauss
Stephen Strumello
Vaiyapuri Subramaniam
Brandon Sucher
H Sugarman
Gretchen Sundquist
Francesca Swailes
Cinthia Sweeney
Meschelle Swift
Lyndall Swinford
Patricia Szybist
Ryan Tabis
Deborah Tady
Catherine Taglieri
Sheila Takayesu
Kim Tanzer
Shalim Tatar
Mark Taylor



Contributor

Michelle Leatherwood

Michelle Leatherwood, Doctor of Pharmacy, graduated from the Samford University McWhorter School of Pharmacy. During her fourth year in pharmacy school, she served as the APhA-ASP National Awards Standing Committee Chair.

Michelle was also awarded the Charles C. Thomas Scholarship from the APhA Foundation. It was important for Michelle to give back to the APhA Foundation after she received the Scholarship. According to Michelle, people should donate to the APhA Foundation in order to spread the word about the good work of the organization.

I did not know much about the APhA Foundation until I received the scholarship. It is very impressive what the APhA Foundation does to move the profession forward. Contributions allow the APhA Foundation to do its job, which is to show the value of pharmacists to patient care services.



Contributor

Steve Simenson

CEO & Managing
Partner, Goodrich
Pharmacy, Inc.

Over the years, the APhA Foundation has been a valuable partner of mine. Its support of pharmacists and pharmacy practice is ongoing and continues to grow. The research initiatives supported by the APhA Foundation help redefine and grow our scope of practice, and collaboration with partners inside and outside of the pharmacy industry contributes greatly to our ability to optimize care for our patients. These initiatives are made possible by the generous giving of the APhA pharmacy family. With continued contributions by all pharmacists, our chosen profession will continue to shine in new models of care.

Tom Temple
Colleen Terriff
Jordan Thibodaux
Mary Thoennes
Cathy &
Thomas Worrall
Charles Thomas
Janet Thomas
Michelle Herbet
Thomas
Kimberly Thompkins
Leah Tiberius
Angela & Bradley Tice**
Jennifer Tilleman
Beth Toalston
Erica Tolle
Theresa Tolle**
Norman Tomaka
Scott Tomerlin
David Tompkins
Phan Tong
Laura Topor
Robert Touns
Farah Towfic
Salematau Tradre
Hoa Truong
Hoai An Truong
Troy Trygstad*
Carole Tucker
Megan Tucker*
Diane & Timothy Tucker
Jenny Tuttle
Jon Tuttle
Eleanor Twigg
Meltem Unal
R. Unangst
Benjamin Urick
Kelly Valente*
Peggy Van

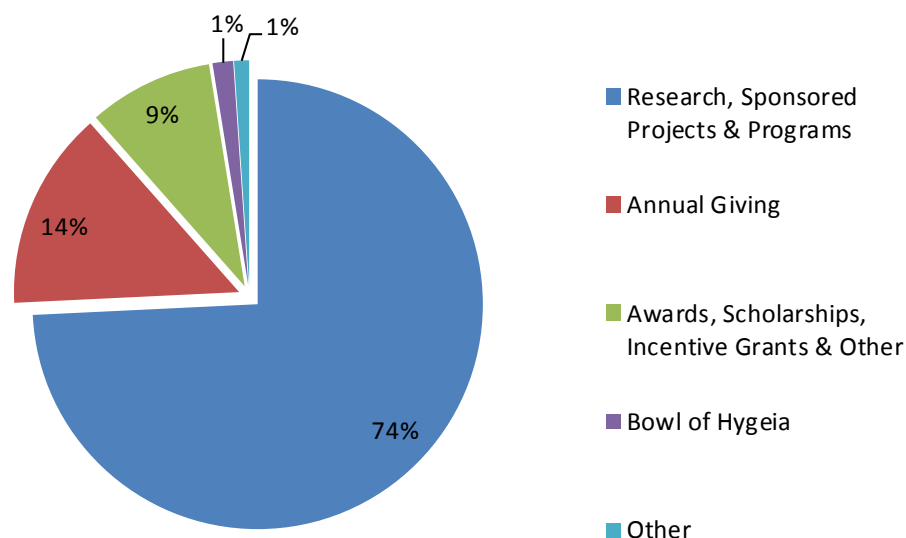
Heather Van Ningen
John & Joyce Vandel
Bernard Vanpelt
Alex Varkey
Parisa Vatanka
Rosa Vazquez
Deborah Veselka
Mark Vestal
Marco Vidaurri
Peter Vlasses
Eleanor Vogt* &
James Kuperberg
Timothy Vordenbaumen Sr.
Jeanne Waggener
Marvin Wainwright Jr.
Donna Walker &
Mark Pulido
Brian Wall
Sylvia Walsh
Leslie Walthall
Jane Walther
Larry Walther
Stephanie Walton
Fufa Wami
Harlan Wand
Lloyd Warner
Jeffrey Warnken
Cynthia Warriner
Martha Warriner
Wayne State University
APhA-ASP Chapter
Krystalyn Weaver
Paula Weaver
Wendy Weber**
Kathy Webster
Alex Wehner
Debra Weintraub
Barbara Jean
Weisensell
Brad Welage

Joseph Welch
Lucianne West
Karen Whalen
Pamela Whitmire
Margherita Giuliano
Wichowski
Phil Wickizer
Hannah Wiery
Marie Wilder
Meghan Wilkosz
Christopher Willard
Donald Williams
Judy Williams
William Wimmer
Susan Winckler
Richard Woerz
Wilma Wong
May Woo
Roland Wood
Woodstock Pharmaceuti-
cal and Compounding
Cathy &
Thomas Worrall
Dennis & Patti Worthen
Edward Wright
Anjanette Wyatt
Christine Y. Barr
Pheng Yang
George Yasutake
Brenda Yeager-
McElligott
Glenn Yokoyama
Andrew Young
Naghmeah Zamani
Sandra Zaragoza
John Zehner
David Zgarrick
William Zipse
Daniel Zlott**
Steven Zona

*APhA Foundation Board of Directors

**APhA Board of Trustees

We have omitted credentials in order to provide a consistent recognition of donors.



APHA FOUNDATION SUPPORT 2016

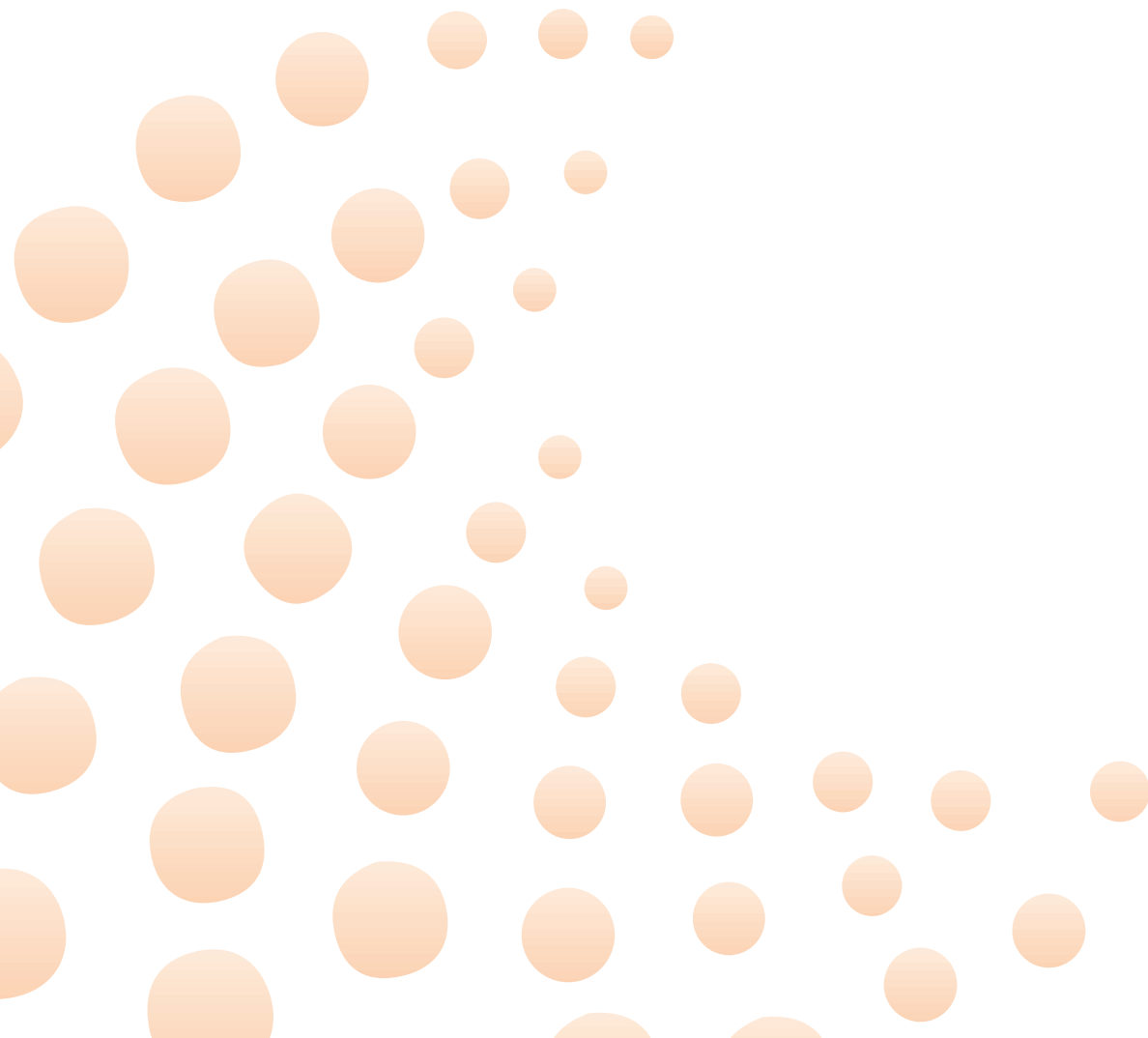
Research, Sponsored Projects & Programs	74%	\$1,053,032
Annual Giving	14%	\$ 202,301
Awards, Scholarships, Incentive Grants & Other	9%	\$ 127,016
Bowl of Hygeia	1%	\$ 20,900
Other	1%	\$ 15,182
		<u>\$1,418,431</u>

STATEMENT OF FINANCIAL POSITION

	December 31,	
	2016	2015
Total Assets	<u>\$ 5,812,188</u>	<u>\$5,723,290</u>
Total Liabilities	<u>\$ 1,435,110</u>	<u>\$ 1,277,496</u>
Net Assets:		
Unrestricted	\$ 1,363,982	\$ 1,482,568
Restricted	<u>\$ 3,013,096</u>	<u>\$ 2,963,226</u>
Total Liabilities & Net Assets	<u>\$ 5,812,188</u>	<u>\$5,723,290</u>

The APhA Foundation would like to thank our generous contributors and supporters. Your donations enable us to conduct research on innovative models, produce valuable new resources for pharmacists and patients, and recognize the achievements that motivate advancement of the profession.

THANK YOU.



**To improve health by
inspiring philanthropy, research and
innovation that advances
pharmacists' patient
care services**

We thank our many contributors
who have chosen to give an enduring gift
to the APhA Foundation by including
us in their estate planning.
We are grateful for your thoughtful
and long-term generosity.

Learn more at **aphafoundation.org**

APhA Foundation
2215 Constitution Ave NW
Washington, DC 20037-2985

Website: www.APhAFoundation.org
Donate: www.aphafoundation.org/make-a-donation
Email: info@aphafoundation.org
Phone: 202-429-7565

Facebook: <http://www.facebook.com/APhAFoundation>
YouTube: <http://www.youtube.com/aphafoundation>

