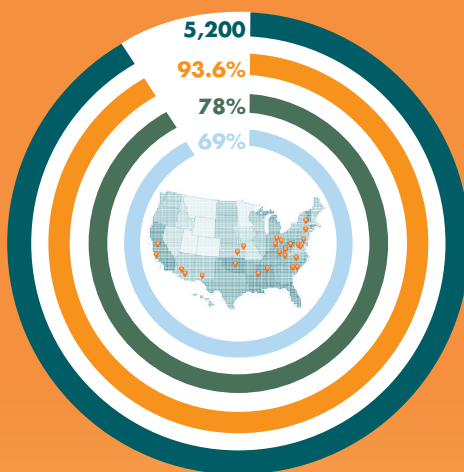


The **APhA** **Foundation**

2013 ANNUAL REPORT



5,200

PATIENTS CARED FOR
across all projects

78%

Included in research outcomes

93.6%

BECAME HEALTHIER
through our work

69%

Met treatment goals

Our Work is Fundamental to the Transformation of Healthcare



Visit our website at www.aphafoundation.org

Who We Are

The APhA Foundation is a not for profit 501(c)(3) organization headquartered in Washington, D.C., and is affiliated with the American Pharmacists Association (APhA), the oldest and largest national professional society of pharmacists in the United States established in 1852.

MISSION

The APhA Foundation's mission is to improve people's health through pharmacists' patient care services. The APhA Foundation will accomplish this through:

Research Projects: Conduct innovative research to transform practice and enhance patient care through valued care giving by pharmacists.

Programs: Recognize and reward innovation and leadership in the profession.

VALUES

The patient's central role in all APhA Foundation projects is recognized and respected. Further, the APhA Foundation values the critical role pharmacists have in collaboration with other health care providers to assure the best possible health outcomes.

**Innovation • Collaboration • Respect • Patient-Centric
Evidence-based • Outcomes-driven • Pharmacists' Role • Quality**

VISION STATEMENT

The APhA Foundation is nationally recognized as a leader in conducting and supporting research and demonstration projects. The APhA Foundation designs programs that create an improved medication use system in the United States where patients, pharmacists, and prescribers collaborate to dramatically improve the cost and quality of consumer health outcomes through safe and effective use of medicines.

OUR WORK IS FUNDAMENTAL TO THE TRANSFORMATION OF HEALTHCARE

Our research explores and evaluates innovative models of care that enhance healthcare quality by integrating pharmacists into the healthcare team. Our work transforms healthcare by empowering patients; increasing collaboration between pharmacists, physicians and other members of the healthcare team; enhancing safety through optimization of medication use; and aligning incentives for patients, providers, and payers, improving health outcomes and reducing healthcare costs.

On Behalf of Your Leaders



Daniel F. Luce,
RPh, MBA

IT HAS BEEN A TRULY REWARDING EXPERIENCE serving as your APhA Foundation President. As I end my second term as President of the Foundation, I am highly encouraged by how much the organization has grown. In 2013, we saw the benefits of our expanded board, refined strategic plan, and newly-implemented board committee structure. The APhA Foundation is in a better position than ever before to succeed in its mission of improving people's health through pharmacists' patient care services.

This is a challenging time for our nation's healthcare system, and as pharmacists, we know that we can be a part of the solution. The APhA Foundation provides a fundamental source of evidence that pharmacists can improve health outcomes when integrated into the healthcare team. Interim data from the Foundation's largest initiative, Project IMPACT: Diabetes, demonstrated how pharmacists improved health outcomes for patients with diabetes in 25 underserved communities. This monumental accomplishment proves that a collaborative model of care including pharmacists can reduce costs and make patients healthier, and paves the way for spreading the model to more populations.

I fully support the direction of the Foundation as it continues to drive further applied innovation in pharmacy practice. There are many ways that pharmacists can benefit patients when given the opportunity, and the Foundation is a leader in establishing initiatives that demonstrate how to add pharmacists into the equation. I look forward to the continued growth of the Foundation as it extends its research agenda to a variety of healthcare spaces. I hope you will continue to partner with the Foundation, as I plan to do, in the effort to empower pharmacists to improve healthcare.

Sincerely,

Daniel F. Luce, BSP Pharm, RPh, MBA, FAPhA
2013 APhA Foundation President

REFLECTING ON 2013, I am energized by all the ways we at the APhA Foundation were able to expand and strengthen our efforts to improve people's health and transform healthcare. It's not only our patient-centered research initiatives that are propelling this transformation – it's also the collective voice of members of the pharmacy community to enact positive changes in the healthcare arena. I look forward to seeing how this elevated awareness of what pharmacists can do to improve health will further our mission in the future.

Our 2013 momentum reached new heights in October with the launch of our brand-new, redesigned website, centered on the theme of our innovative work and its impact on patients' lives. We wanted our site to communicate the what, why, and how – what we do, the objectives that guide our work, and the multi-faceted ways we're carrying out our mission every day – so that it could serve as a dynamic resource for sharing our vision. There are many ways the Foundation, our donors, and our partners can use this new platform to make the case that pharmacists are vital members of the healthcare team.

During American Pharmacists Month, over 230 donors made a very meaningful contribution to our mission by bringing our Pharmacists Care campaign to life. Through our display of over 600 lawn markers on the front lawn of the American Pharmacists Association headquarters building, we made a strong and visible statement together: pharmacists care for patients, and the patient care services they provide make a significant impact on patient health nationwide. We are grateful to those who joined us in sharing our pride in the pharmacy profession.

As 2014 unfolds, I look forward to exploring new innovations in pharmacists' patient care services, and I am confident that your support of our efforts will drive future changes in our healthcare system for the benefit of patients nationwide.

Sincerely,

Mindy D. Smith, BSP Pharm, RPh
APhA Foundation Executive Director



Mindy D. Smith,
BSP Pharm, RPh

Our 2013–2015 Strategic Plan

In 2013, the APhA Foundation implemented a dynamic strategic plan that demonstrates a collective vision for the future of the Foundation and the future of pharmacist-led patient care models. This plan includes eight overarching goals:

1. **Research and innovation: Bolster and focus innovative research agenda and support existing projects to ensure strong outcomes.**
2. **Programs Supporting Pharmacists and Patients: Implement and sustain proven strategies that recognize pharmacists' successes and improve people's health.**
3. **Finance/Revenue Diversification/New Business: Provide the financial resources necessary to meet the mission of the organization.**
4. **Development/Fundraising: Sustain the work of the Foundation through creation of new revenue streams and increased donor contributions.**
5. **Communications: Bolster communications and sustain/expand current programs.**
6. **Collaboration and Partnerships: Strengthen collaboration with key partners/organizations.**
7. **Board Governance: Strengthen board governance and ensure the board has a strong structure including well-chosen board members.**
8. **Human Resources: Build capacity in the organization through strategic human resources planning.**



Sandra Leal, PharmD, MPH, FAPhA, CDE, and Marisa Rowen, PharmD, CDE, pose with their Pharmacists Care lawn sign.



*Maria Young, RPh, works with a patient.
Photo Courtesy of Michigan Pharmacists Association.*

2013 STRATEGIC ACHIEVEMENTS

The Foundation accomplished several key objectives in 2013 supporting the overarching goals of its strategic plan. Ultimately, these accomplishments will bolster the Foundation's innovative research and programmatic agenda, which strengthens the impact of pharmacists' patient care services on healthcare for the benefit of patients.

Research and Innovation:

Published Research/Tools

The Foundation's research initiatives produced a record number of four publications and two resources this year demonstrating the depth and value pharmacists offer as members of the healthcare team. In addition, the Foundation submitted five new research proposals and invested in expanding research and innovation capacity.

Finance/Revenue Diversification/ New Business:

Sustainable Revenue

In an effort to establish a sustainable revenue source to fund ongoing operations, the Foundation is working to extend the use of the Patient Self-Management Credential (PSMC) to healthcare providers across the country. The first pilot was implemented in Cincinnati this year with primary care physicians, and a partnership was established with Prescribe Wellness™ to launch PeakWellness™ in 2014.

Development/Fundraising:

426 New Donors

Pharmacists Care, a unique development and awareness campaign, sparked an increase in new donors to the Foundation in 2013. Several individuals also participated in the Marine Corps Historic Half Marathon and raised over \$3,500 for the APhA Foundation in just that one race! In addition, 60 influential donors joined the inaugural class of the 1953 Society. Because of these initiatives and generous donors, annual fund giving, which supports the Foundation's operations, nearly doubled this year.

Communications:

Website & Communications

The Foundation elevated communications this year through the launch of its new website, doubling its viewership the last three months of 2013. A new communications manager was hired to increase the Foundation's capacity to refine its branding and messaging as well as raise awareness of its work. In addition, the Foundation boosted its social media activity with the creation of a new Twitter account and a 25% increase in "likes" on Facebook.

Board Governance:

Strengthened Board Structure and Governance

The Foundation expanded its board to 15 members to allow for recruitment of individuals with diverse skills and talents. A high impact board committee structure was implemented to strengthen internal communications and partnership between board members and staff. During a workshop in June, a board evaluation was conducted to identify areas for improvement. Several board policies were adopted or revised including a Strategic Opportunities Fund (Reserve Fund) Policy, Conflict of Interest Policy, Board Giving Policy, Gift Acceptance Policy, and Nominating Committee Guidance Policy and Gap Analysis.





“Rockstars on Tour” Community Champions Meeting

In October 2013, the APhA Foundation hosted 40 representatives from the 25 Project IMPACT: Diabetes sites to share key insights and recognize accomplishments. Representatives from each of the 25 communities gave panel presentations highlighting their process of care, participant profiles, results, and overall impact. Community representatives also received media and legislative training and discussed implementation challenges, sustainability needs, and best practices. Select participants met with their legislators on Capitol Hill to share personal stories about the impact pharmacists had in their communities through the project.

The IMPACT of Our Research

IMPROVING DIABETES OUTCOMES IN 25 COMMUNITIES



Project IMPACT: Diabetes

This year, the APhA Foundation announced that interim data from Project IMPACT: Diabetes confirmed the value of pharmacists in improving the key indicators of diabetes. The Foundation began the project in November 2010 as an initial grantee for the Bristol-Myers Squibb Foundation’s \$100 million, five-year Together on Diabetes®: Communities Unit-ing to Meet America’s Diabetes Challenge initiative. Across 25 underserved and disproportionately affected communities, a population of over 2,000

diabetes care teams that included pharmacists, and the interim results showed statistically significant improvements in the standards of diabetes care: A1C, LDL Cholesterol, Systolic Blood Pressure and Body Mass Index. The flexibility of the Foundation’s process of care model allowed this initiative to be a success in diverse populations and practice settings. The Foundation will publish the final results of the project in 2014 and focus on sustaining the Project IMPACT: Diabetes sites and scaling the model to an even larger population.

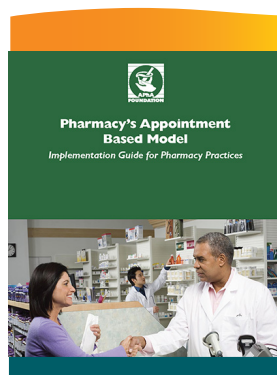
In the News

A press release announcing interim results from Project IMPACT: Diabetes and an overview video were shared with over 4,000 media outlets on October 24, 2013. The interim results were covered in a variety of publications and broadcasts including Pharmacy Practice News, Drug Topics, USA Radio Live, Chain Drug Review, Drug Store News, Endocrine Today and Health Leaders media.

PHARMACY PRACTICE NEWS



The IMPACT of Our Research



Appointment Based Model (ABM)

The Foundation gathered stakeholders together on January 9-10, 2013, in Washington, D.C., to synthesize their experiences related to designing and implementing innovative methods to improve medication adherence through appointment based models and refill synchronization. The resulting first white paper on the topic titled “Pharmacy’s Appointment Based Model: a prescription synchronization program that improves adherence,” was published in September with a corresponding implementation toolkit. The implementation tool kit, enhanced from a compilation of documents created by the Alliance for Patient Medication Safety, provides step by step instructions for any pharmacy to integrate the ABM into its operations. A new ABM project began at the end of 2013 to evaluate the efficacy of the ABM for beneficiaries of an Arizona accountable care organization (ACO) in partnership with a Federally Qualified Health Center and a regional community pharmacy chain.

Alzheimer’s Screening & Project IMPACT: Hypertension Publications

Manuscripts containing final results of the Alzheimer’s Screening Project and Project IMPACT: Hypertension were published in 2013, respectively in the International Journal of Clinical Pharmacy and Innovations in Pharmacy. The Alzheimer’s Cognitive Memory Screening and Referral Program (CMSRP) was the first project to measure the impact of a pharmacist-based cognitive memory screening service delivered in community pharmacy practice in the United States. Project IMPACT: Hypertension gave pharmacists the unique opportunity to tailor education and monitoring of patients with high blood pressure based on data from home blood pressure monitoring devices that wirelessly transmitted data to the pharmacy computer. Both manuscripts are available at APhAFoundation.org/publications.

CDC Collaborative Practice Tools

The Foundation celebrated a major accomplishment in December 2013 when the U.S. Centers for Disease Control (CDC) published tools informed by the Foundation’s consortium on Collaborative Practice Agreements (CPAs) and pharmacists’ patient care services. The consortium was supported by the CDC Division for Heart Disease & Stroke Prevention (DHDSP). A white paper with recommendations generated from the consortium and supporting evidence for broad use of CPAs was published in the March 2013 issue of the Journal of the American Pharmacists Association (JAPhA). The Foundation partnered with the CDC to translate the recommendations from the white paper into an easy-to-follow tool kit targeting four audiences: pharmacists, other providers, payers, and legislators.

Diabetes Credentialing: The Next Phase

The Patient Self-Management Credential (PSMC) for Diabetes has been effectively used in the Foundation’s research for over a decade. Traditionally, the tool has helped pharmacists identify patient strengths and weaknesses related to knowledge, skills, and self-management performance, which enables them to customize education and recognize patient improvement in those areas. In the next phase of the project, the Foundation seeks to expand the use of the tool in the broader healthcare team to deliver a proven patient-centered diabetes solution. In 2013, the Foundation conducted its first pilot test at a physician’s office in Cincinnati. The Foundation is currently refining the online platform of the PSMC to enable enhanced collaboration and application in a variety of practice settings.

*Thank you to the following organizations
for their support of these projects:*

Bristol-Myers Squibb Foundation

U.S. Centers for Disease Control and Prevention (CDC)

Daiichi-Sankyo, Eisai Inc.

Forest Laboratories

Pfizer

Sanofi-Aventis

Incentive Grants

Inaugurated in 1993, the Incentive Grants for Practitioner Innovation in Pharmaceutical Care is the APhA Foundation's longest running program. Incentive grants offer pharmacists seed money to implement or support an existing patient care service within their pharmacy practice. Grants totaling more than \$500,000 have facilitated the development of nearly 500 pharmacy-based projects, improving the health outcomes of thousands of patients across the country.

The 2013 Incentive Grants were given out in four categories: Residents and their Preceptors, Practitioner Innovation in Pharmaceutical Care, Innovation in Immunization Practices and Student Pharmacist Innovation in Immunization Practices.



Herbert Incentive Grant recipient Holly Fahey, PharmD (in yellow) with the team at the Charitable Pharmacy of Central Ohio.

2013 RECIPIENTS

Student Innovation in Immunization Practices

University of Kentucky College of Pharmacy – Lexington, KY

Innovation in Immunization Practices

Sharon Dindial – Dominick's Pharmacy – Countryside, IL

Sara Flynn – Walgreens/MCPHS – Chelsea, MA

Leslie Norris – Moose Professional Pharmacy – Concord, NC

Residents and their Preceptors

Courtney Ammons - Jewel Osco Pharmacy – Lombard, IL

Bobby Bero II – Wheeler Pharmacy – Lexington, KY

Macon Carroll – Duren's Pharmacy – Waynesboro, TN

Sarah Krahe Dombrowski – Rite Aid Pharmacy/Rite Care – Pittsburg, PA

Taylor Garber – University of Cincinnati and Kroger Pharmacy – Cincinnati, OH

Valerie Garcia – Centro San Vicente Health Clinic – El Paso, TX

Amanda Gates – Kerr Drug – Chapel Hill, NC

Alison Huet – Kroger Pharmacy – Indianapolis, IN

Bijal Patel – Dominick's Pharmacy – Chicago, IL

Andrea Santoro – Kroger Pharmacy – Cincinnati, OH

Brittany Snodgrass – Fruth Pharmacy – Pt. Pleasant, WV

Renee Stephenson – Jewel-Osco Pharmacy – Chicago, IL

Jennifer Wang – Quality Food Centers – Bellevue, WA

Anthony Weiland – Middleport Family Health Center – Middleport, NY

Practitioner Innovation in Pharmaceutical Care

Jean-Venable "Kelly" Goode – The Daily Planet, Inc. – Richmond, VA

Amanda Hollar – Kerr Drug – Chapel Hill, NC

Christine Rash – The Antithrombosis Clinic (ATC) at the University of Illinois Hospital and Health Sciences Center – Chicago, IL

DANIEL A. HERBERT INCENTIVE GRANT RECIPIENT

Holly Fahey – Charitable Pharmacy of Central Ohio – Columbus, OH

Incentive Grants made possible through a generous grant from the Community Pharmacy Foundation



“The APhA Foundation is very proud of its incentive grants program. Incentive grants encourage practitioners to foster new ideas and demonstrate the value of advancing pharmacists’ patient care services”

— Mindy Smith, BSP Pharm, RPh
APhA Foundation Executive Director

2013 Incentive Grants Review Committee

The APhA Foundation thanks the number of pharmacists who volunteer their time to review submitted applications for award selection.

Lois Adams	Kevin Fortier	Roger Klotz	Valerie Prince
Beverly Adato	Cynthia Foslien-Nash	Marcenia Knight	John Romankiewicz
Feras Almalouf	Heather Free	Pam Koss Justice	Mitch Rothholz
Kristen Binaso	Salvatore Giorgianni	Dixie Leikach	Dyan Rowe Davis
Cynthia Boyle	Meredith Goodwin	Amy Leung	Mara Satter
Jeffrey Bratberg	Kathleen Greer	Lawrence Logue	Jann Skelton
James Bresette	Jan Hastings	Susan Lutz	Cathy Taglieri
Amber Briggs	Karl Hess	Eric Mack	Margaret Tomecki
Jonathan Casavant	Robert Heyman	Scott McDowell	Ann Ungerman
Patricia Chase	Michael Hogue	Victoria Miller	Flynn Warren
Cheryl Chee	Mary Hollinger	Brice Mohundro	Carolynn Weber
Cheryl Clarke	Marshall Hollis	Lawrence Momodu	Leslie White
Kimberly Daugherty	Amanda Huels	Dave Morgan	Eileen Wilbur
Karen Dunavant	Emery Johnson	Amy Murdico	Karen Williams
Stephen Eckel	Candace Jordan	Dina Norris	May Woo
Akesha Edwards	Lori Kanno	Jeegisha Patel	Thomas Worrall
Mary Euler	Amy Kem-Lai Leung	Natasha Petry	
Joseph Fink	Hal King	Margaret Pitcock	

Student Scholarship Program

The APhA Foundation Student Scholarship Program recognizes students who choose to invest their time in their school's APhA-ASP chapter to help shape the future of the profession while managing the demands of a full-time pharmacy curriculum. Applicants are evaluated on their potential to become leaders for the profession of pharmacy, as demonstrated by involvement in school and community activities and academic performance. Within this program are named scholarships that acknowledge gifts made to the fund by individuals or groups.

2013 SCHOLARSHIP RECIPIENTS

John A. Gans Scholarship

Benjamin M. Laliberte – Massachusetts College of Pharmacy and Health Sciences – Boston

Boyle Family Scholarship

Jamie L. Elsner – University of Maryland School of Pharmacy

APhA Auxiliary/APhA Foundation Student Scholarship

Indrani Kar – University of Pittsburgh School of Pharmacy

Charles C. Thomas Scholarship

Autumn D. Bagwell – Samford University, McWhorter School of Pharmacy

Mary Louise Andersen Scholarship

Ashley N. Pugh – Union University School of Pharmacy

George F. Archambault Scholarship

Marilyn J. Jen – University of Michigan College of Pharmacy

Gloria Francke Scholarship

Victoria S. Pennington – Ohio Northern University Raabe College of Pharmacy

Robert D. Gibson Scholarship

Sara A. Wettergreen – South Dakota State University College of Pharmacy

Marvin and Joanell Dyrstad Scholarship

Ashley Potter – South Dakota State University College of Pharmacy

Sam Kalman Scholarship

Brian C. Primeaux – The University of Louisiana at Monroe College of Pharmacy

Paul Pumpian Scholarship

Kelsie K. Hanson – The University of Montana – Skaggs School of Pharmacy

Juan and Esperanza Luna Scholarship

Matthew P. Stevens – The University of Arizona College of Pharmacy

2013 Student Scholarship Selection Committee

Submitted applications are reviewed and selected by a Student Scholarship Program Committee. Thank you to our dedicated committee:

- Nancy Alvarez
- Cynthia Boyle
- Lisa Clayville
- Pamela Koss Justice
- Hazel Pipkin
- April Shaughnessy



2013 APhA-ASP Opening General Session Scholarship presentation in Los Angeles, CA.



2013 Scholarship Contributors

The APhA Foundation recognizes those who give in support of the following scholarship and student experience funds:

APhA Auxiliary/ APhA Foundation Scholarship, Gloria Francke Scholarship, Ton Hoek Scholarship, Juan and Esperanza Luna Scholarship, Ron Williams Memorial/ Utah Ping School Scholarship, and Dennis and Patricia Worthen APhA-ASP Presidential Award.

Contributors:

Paul Abramowitz
James Alexander
Nancy Alvarez
Board of Pharmaceutical Specialties
J. Lyle Bootman
Tina Brock
Malcolm Broussard
Windy Christner
Toby Clark
Kevin Colgan
Pierre Del Prato
Estate of Barbara Levine-Hershey

Linda Gainey
Donald Gronewold
Abraham Hartzema
Dennis Helling
Metta Lou Henderson
Donald Letendre
William Letendre
Eugene and Susan Lutz
Lucinda Maine
Henri Manasse
Kamal Midha
Michael Moné

Jeffrey Norenberg
Joseph Oddis
Kenneth and Kittye Roberts
Rosalie Sagraves
Douglas Scheckelhoff
Hazel Seaba
Jenelle Sobotka
Thomas Thielke
Peter Vlasses
Dennis and Patricia Worthen
William Zellmer

Dennis and Patricia Worthen APhA-ASP Presidential Award

The Dennis and Patricia Worthen APhA-ASP Presidential Award recognizes the tremendous leadership provided to student pharmacists by the President of APhA-ASP during his or her term in office. The individual is awarded a \$1,000 stipend along with a bronze eagle statue. The APhA-ASP Presidential Award also recognizes the president-elect with a \$500 stipend. Beginning in 2013, the president elect now sits on the APhA Foundation Board of Directors.

2013 Recipients



Brandi Hamilton, APhA-ASP National President, University of Arkansas for Medical Sciences



Nicholas Capote, APhA-ASP National President-elect, The University of Tennessee Health Science Center

APhA Carl F. Emswiler Summer Internship in Association Management

The Emswiler Summer Internship in Association Management provides student pharmacists experience in national association activities, pharmacy practice issues, educational programming, state services, scientific affairs, student affairs, public relations and project management.



Jewell Emswiler and Maggie Oser

2013 Recipient

Maggie Oser, The Ohio State University

During her internship Maggie Oser worked closely with the Student Development team to improve her understanding of the association's goals and organizational structure. She helped them with a variety of projects including the Summer Leadership Institute, planning for the Midyear Regional Meetings and Patient Care Project updates.

She was also involved in APhA's policy and advocacy efforts. In June 2013, Oser attended the Pharmacy Caucus on the Hill to gain support for the House of Representatives Bill 1024: Medication Therapy Management Empowerment Act of 2013. Several key speakers identified the importance of MTM and Care Transitions and discussed Provider Status efforts. Oser was also able to attend the House Ways and Means Hearing on Medicare Post-Acute Care Payments and heard several witnesses discuss proposals on ways to reform this system.

Executive Residency Program

The APhA Foundation Executive Residency in Association Management and Leadership is a postgraduate training program under the direction of the Executive Director of the APhA Foundation and through the Knowlton Center for Pharmacist-Based Health Solutions. The residency program aims to train pharmacy college graduates for leadership positions within the profession and other health-related organizations, and in the many aspects of association management.



Krystalyn Weaver and Ryan Burke

“ I enjoy learning how the daily work of the Foundation impacts the profession and patient care ”

— Ryan Burke, PharmD

Krystalyn Weaver, PharmD

The 2012-2013 Executive Resident, Krystalyn Weaver, completed her residency in June 2013. Weaver is currently Director of Policy and State Relations at the National Alliance of State Pharmacy Associations (NASPA).

Weaver graduated in 2012 from the University of Toledo College of Pharmacy and Pharmaceutical Sciences with a Doctor of Pharmacy degree.

As part of her residency, Weaver was directly involved with the Pinnacle Awards, Student Scholarships, and Incentive Grants. She was also involved in many initiatives with APhA, including working with the House of Delegates Policy Committee, writing for Pharmacy Today, leading the effort to update the APhA Career Pathway Program, and contributing to the association's Provider Status initiative.

Ryan Burke, PharmD

The 2013-2014 Executive Resident Ryan Burke is from New Orleans, Louisiana, and studied pharmacy at the University of Louisiana at Monroe. As a student pharmacist, Burke was actively involved in many professional organizations including APhA, Phi Delta Chi, Phi Lambda Sigma, and the Louisiana Society of Health-System Pharmacists. In 2011-2012, he served as APhA-ASP National Member-at-large and Chair of the APhA-ASP National Communications Standing Committee.

During his residency, he has been contributing to a number of Foundation programs, including Student Scholarships and Incentive Grants, and has had direct involvement with the Board of Directors. In addition, Burke has been involved in many initiatives with APhA, including the APhA House of Delegates Policy Committee, the first ever pharmacist-run health fair on the Capitol Hill, and activities related to Provider Status. He will complete his residency in June 2014.



Pinnacle Awards

The Pinnacle Awards, established in 1998 by the APhA Foundation's Quality Center, celebrate significant contributions to the medication use process through increasing patient adherence, reducing drug misadventures, promoting the use of national treatment guidelines, improving patient outcomes, or enhancing communication among the members of the health care team.

Premier support for this activity was provided by an independent educational grant from Merck. It was additionally supported by an educational donation provided by Amgen.

2013 RECIPIENTS

INDIVIDUAL AWARD FOR CAREER ACHIEVEMENT

Presented to an individual who by their actions has demonstrated exceptional leadership in enhancing health care quality and medication use.

Steven W. Chen, PharmD, FASHP, FCSHP

Chen is an Associate Professor and the Hygeia Centennial Chair in Clinical Pharmacy at the University of Southern California School of Pharmacy. He supervises clinical pharmacy services integrated into over a dozen safety net community clinics in Los Angeles and Orange Counties. These services have reduced the clinics' medication costs by up to 75%, while significantly improving control of chronic diseases for the most challenging patients. Chen is part of a faculty team that has acquired over \$15 million in grant funding to advance the spread of ambulatory care clinical pharmacy services, including a \$12 million grant from the Center for Medicare and Medicaid Innovation to evaluate the impact of clinical pharmacy teams integrated into safety net clinics on quality, safety and total health care costs.



GROUP PRACTICE-HEALTH SYSTEM-CORPORATION AWARD

Recognizes a significant scientific contribution and/or quality improvement project.

Community Health Association of Spokane (CHAS)

Community Health Association of Spokane (CHAS) is a non-profit community health center that provides access to all patients, regardless of insurance status or ability to pay. It is a "patient-run" organization with patients occupying a majority of the positions on its Board of Directors. Operating since 1995, CHAS currently has nine clinic locations within the Inland Northwest (eastern Washington and northern Idaho), and serves as a health care home to nearly 50,000 patients. There are currently 25 pharmacist providers incorporated into the care team who contribute to the continuity of care for the patients within the system. This integration has resulted in safer and more effective medication use for the patients they serve.





GOVERNMENT AGENCY-NONPROFIT ORGANIZATION-ASSOCIATION AWARD

Special emphasis in this category is placed on submissions that assist patients and their caregivers in achieving better outcomes from their medications.

The University of Arizona College of Pharmacy's Medication Management Center (MMC)

The Medication Management Center ("MMC") is a pharmacist-run medication management program established in 2006 at The University of Arizona's College of Pharmacy. The program uses pharmacists in a call center to provide Medicare patients with medication therapy management (MTM) services. The genesis of the MMC was established in law in direct response to the public policy direction outlined in the Medicare Modernization Act of 2003 ("MMA"). By 2014, the MMC will be the largest provider of MTM services in the nation. Since 2006, the center has delivered MTM services to well over 1,000,000 Medicare beneficiaries nationwide.



2013 Pinnacle Awards Selection Committee

Daniel Buffington, PharmD, MBA
President and Founder
Clinical Pharmacology Services, Inc

Laura Cranston, RPh
Executive Director
Pharmacy Quality Alliance, Inc.

Magaly Rodriguez de Bittner, PharmD, BCPS, CDE
Professor and Chair
Department of Pharmacy Practice and Science
University of Maryland School of Pharmacy

Andy Stergachis, PhD, MS, BSPHarm
Professor, Epidemiology and Global Health
University of Washington School of Public Health

Thomas Temple, BSPHarm, MS, FAPhA
President
Tom Temple Consulting LLC





In 2013, we launched PhilanthroSpheRx, a channel for our donors to expand upon the work they do for patients every day in a philanthropic way. PhilanthroSpheRx is pharmacy's philanthropy, funding our ability to be a leading source of innovative research demonstrating how pharmacists can positively impact healthcare. Through the support of our generous donors, we are pursuing new project opportunities, producing valuable new resources for the profession, and cultivating new leaders through our student and incentive grant programs.

2013 CONTRIBUTORS

Names in bold type are donors who give on a monthly or quarterly basis.

Executive Level (\$2,500-\$4,999)

Kelly Brock
Ed & Ann Hamilton
Betty Jean Harris
Nicki Hilliard
Thomas Menighan
Mitch & Julie Rothholz
Dominic Solimando
Thomas Temple
Timothy Tucker
John & Joyce Vandel
Debra Weintraub
Glenn Yokoyama

Anne Burns
Laura Carpenter
Mark Cziraky
Leonard Edloe
Mary Euler
William & Sharon Fassett
Aprill Gardner
Stuart & Seena Haines
Starlin Haydon-Greatting
William Heath
Dennis Helling
Emery Johnson
Elizabeth Johnson
Elizabeth Keyes

William Riffie
Lynette Sappe-Watkins
Jann Skelton
Ronald Small
Mindy Smith
Gary & Diane Smith
Robert and Rebecca Snead
Farah Towfic
Karen Tracy
Kelly Valente
Eleanor Vogt & James Kuperberg
Pamela Whitmire
May Woo
George Yasutake

Matthew Carrico
Natalie Certo & Josephine Certo
Patrick Clay
George Cobb
Ed Cohen
Marilyn Eelkema
M. Enrique Flores
Tom Floyd
Christopher Forst
Paul Franklin
Harold Godwin
William Heller
Susan Holden
Maclay Hoyne
Lowell Irby

Director Level (\$1,000-\$2,499)

Tery Baskin
Marialice & Jon Bennett
Benjamin & Elaine Bluml
Cynthia Boyle
J. Christopher Bradberry
Deborah Brafford
Jeffery Bray
Lawrence Brown
Daniel Buffington

Calvin & Orsula Knowlton
Pamela Koss-Justice
J. Bruce Laughrey
Lucinda Maine
Jonathan Marquess
Marsha Millonig
Jimmy Mitchell
Katherine Petsos
Karen Reed
Marily Rhudy

Sponsor Level (\$250-\$999)

Nicolas Barakat
Melvin Baron
Leslie Benet
Rosemary Berardi
Lina Bertuzis
Grover & Mary Bowles
Grant Brown
Elizabeth Cardello

LTC Michael Johnson

Robert Kayden
Carole Kimberlin
Cherokee Layson-Wolf
Rita Lewis
Earlene & Gary Lipowski
Eugene & Susan Lutz
Ray Marcrom
Gary Milavetz

continued

Lynette Miyasako
Miriam Mobley-Smith
Jerry Moore
Peter Morton
Stephen Mullenix
Kevin Musto
Matthew & Marilyn
Osterhaus
Robert & Ann Osterhaus
Mark Pilkington
John Rovers
Gary Schneider
Laura Schostag
Steven & Wendy Simenson
Mark Smith
Mary Teresi Milavetz
Michelle Thomas
Norman Tomaka
Lisa Tonrey
Parisa Vatanka
Peter Vlasses
Jennifer Warner
Agathe Wehrli
Drew White
Donald Williams

Donor Level (up to \$249)

Paul Ackerman
Jose Acosta
Cindy Adams
Jennifer Adams
Jon Adams

Jeffrey Adams
Adine Adas
Patricia Adkins
Sondra Adkinson
Irene Ahlstrom
Emily Akilov
Titilayo Akinyoyenu
Gary Albers
Oliver Aldridge
Jennie Allen
Nancy Alvarez
Robert Amity
Chris Anako
Janice Anderson
Don Anderson
Justin Anderson
Ann Angle
Mark Antis
Michelle Antonelli
Birute Apke
James Appleby
Suzi Arant
Deborah Armstrong
Daniel Aronowitz
Joel Aronson
Frank Ascione
Keith Ashby
Jen Athay Adams
David Axt
RoseMarie Babbitt
Somkoum Baccam
David Baker
Allyson Baker
Jeffrey Baldwin
Melania Banach
Kevin Banwart

Carla Barber
Kelly Barland
Donna Barnard
Charles Barr
Pamela Barrett
Donna Barrio
Susan Bartlemay
David Bateshansky
Vijay Bathija
R. Paul Baumgartner
Sheryl Bauminger
Edward Bechtel
Paul Beck
Timothy Becker
Edward Bednarczyk
Stephen Benefiel
Steven Benson
Remi Benzaken
Robert Berkheiser
Richard Bertin
Karen Bills
Bruce Biundo
Curtis Black
Adrienne Blackwell
Denise Bluhm-Heise
James Bobo
Benita Bock
Suanne Boehm
Frederick Bonchosky
Victoria Bond
Michael Booth
Kimberly Boothe
Francis Bosompem
Robert Bostanian
Joseph Bosworth
Michael Bouckaert

Richard Bower
Ernest Boyd
Lynette Bradley-Baker
Cynthia Brasher
Gayle Brazeau
Stan BrittenHarold Brog
Alfred Bromm, Jr.
Jeffrey Brommer
Robert Brooks
Charles Broussard
David Brown
Teresa Bruce
Mickie Brunner
Dennis & Anna Bryan
Robert Buck
Carol Bugdalski-Stutrud
My Bui
Mulugeta Bulti
David Burand
Kristine Burchard
Philip Burgess
Ryan Burke
Stephen Burke
Robert Burton
Andrew Bzowickyj
Gerald Cable
Peter Caldwell
Norman & Mary Campbell
George Campbell
Catherine Canham
Krista Capehart
Nicholas Capote
Andrew Caradona
Matthew Carlson
Sarah Carman
Michelle Carrasquillo

Daniel Carroll	Patricia Coppola	Pierre Del Prato	
Joseph Carstarphen	Michael Corbin	Eugene deLara	
Valentino Caruso, II	Micah Cost	Samantha DeLoache	Michael Edwards
Joseph Casacchia	Jean Cottrell	Richard Deluca	Michael Elliott
John Casey	Jean Courson	Kim Demers	William Ellis
Angela Cassano	Tammy Cox	Abby Dennis	Samy Elsherbini
Nestor Castro	James Coyle	Christine Dennis	Patricia Epple
Jason Cavalier	Val Crane	Nelson Der	Martin Erickson
Wilson Chan	Karen Cree	Ally Dering-Anderson	Jeanne Erickson
John Chandler	Melissa Crews	Beverli Dewalt	Jeff Erwin
Iris Chang	Travis Critzer	Bruce & Jeannine Dickerhofe	Melissa Eshleman
Hing Char	Sandra Crooks	Katherine Diep-Kwei	Cecilia Ezeani-Obijuru
Amy Chavis	Kimberly Crosby	Michael Dietrich	Cecilia Faggioli
John Chin	Laura Crum	Yvonne Dietrich	Carla Fahhoum
Yukping Chiu	Joshua Cummings	Amie Jo Digatono	Michelle Farrell
Stephen Chock	Harold Cunningham	Pearline Dillard	Peter Fay
Windy Christner	Michael Czar	Michel Disco	Erin Fehrenbacher
Pauline Chung	Randy Dahlquist	Maryjo Dixon	Carinda Feild
Annie Yuan Chung Chen	Rochelle Dalton	Ellery Dixon	Louis Feldman
Ruth Clark	Devra Dang	Linh Doan	Tiffany Felton
Denise Clayton	Marie D'Angelo	Julie Dodson	Peter & Angelica Fernandes
Carmen Clelland	Alison Daniels	Kristen Dominik	Rogelio Fernandez
Layci Clifford	Cynthia Dapore	Heather Donovan	John Fichtel, Jr.
William Clyde	Regina Dascher	Tony Dorazio	Bruce Field
Kenneth Coats	Ana Dates	Nicholas Dorich	Holly Filip
R. David Cobb	Bob Davis	Stuart Doughtie, Sr.	Ben Finch
Cindy Cocanower	Tamara Davis	Janelle Douglas	Robin Findlay
Antoinette Coe	Jennifer Davis	Donald Downing	Joseph Fink
Fredric Cohen	Sophia De Monte	Robert Duey	Steve Firman
Kathleen Collier	Joseph Dean	Deborah Dunbar	Erin Fitzgerald
Molly Colombo	Lisa Deberardine	Nathaniel Dunn	Sheri Fitzgerald
Cass Conitz	Elaine DeCarlo	Kelli Duprey	David Fogle
Mary Connelly	Christopher Decker	Anjanette Dymerski	Diane Fonner
Ariane Conrad	Donald DeFazio	Johnnie Early, II	Gregory Fox
Collin Conway	Angelo DeFazio	Roy Eberhart, II	Michael Frank
Rob & Jane Cook	Donald DeGroff	Fred Eckel	Heather Free
			Jennifer French

Steven Friedman	Thomas Goodrich	Deborah Hauser	Esther Jarvis
Gary Frisch	Linda Gooen	Naomi Hayashi	Michele Jensen
Frances Frisch	Laura Gordon	Kirk Hayes	Miyen Joa
Janice Frueh	Dorothy Gourley	Marsha Henderson	Elizabeth Johnson
Jonathan Fudge	John Grabenstein	Brenda Henderson	Terry Johnson
Susan Fuller	Julian Graubart	Kevin Hennessy	Cary Johnson
Conchetta Fulton	Richard Gray	Holly Henry	Michelle Johnson
Peggy Funk	Diane Gray	Jenny Higa	Deborah Johnson
Dan Furtado	Robert Greco	Douglas & Katherine Hillblom	Emery Johnson
Jean Paul Gagnon	Charles Green	Rose Hilmara	Patty Johnston
JoAnn Gaio	Robert Greenwood	Julie Hixson-Wallace	Harry Jones
Randy Gaither	Nicolas Greiner	Rebecca Ho	Elizabeth Jones
Caroline Gaither	Jon Grether	Van-Anh Hoang	Dolores Jones
Julie Gambaiani	Kimberley Griffith	Linda Hoch	Thomas Jordan
John Gamble	Caroline Griggs	Thomas Hoey	Dennis Jorgensen
John & Eileen Gans	Loreto Grimaldi	Joel Hoffman	Kelly Jorgensen
Louis & Kisha Gant	Robert Grisnik	Janice Hoffman	Li Jun
Loni Garcia	Donald Gronewold	Vicky Hoggatt	Jeffrey Junck
Evelyn Garcia	Kimberly Grubb	Michael & Heather Hogue	Howard Juni
Vic Garman	Benjamin Gruda	Sheldon Holstad	Thomas Kachurak
William Garst	Gregg Gunner	Brooke Honey	Tana Kaefer
Jane Gartenhaus	Lauren Gunselman	Steven Hoskins	Melissa Kaiser
Sharon Germann	Mary Gurney	Ellen Huang	Michael Kaplan
Joanne Giannopoulos	Barbra Gustis	Marcia Hufford	Richard Katz
Lucy Gibson	Gail Guzzo	Sandra Hughes	Douglas Kay
Marsha Gilbreath	Lamia Hachani	Daniel & Suzanne Hussar	Coleen Kayden
Erleen & Harrell Gillis, Jr.	Alicia Hager	Tatyana Hutchinson	Suzanne Keeley
Margherita Giuliano Wichowski	Lester Hailey	Julia Ihlenfeldt	Denise Kehoe
Roger Glaser	Richard Halter	Joanne Inami-Asai	Michael Kelly
Sharon Gleason	John Hambright	Patricia Ingels	Cristin Kelly
Pamela Glemboski	Lynette Hamilton Plowden	Barbara Ingram	Karen Kern
Lillie Golson	Karen Harbut	Brian Isetts	Angel & Craig Kimble
Mark Gonitzke	Laurel Haroldson	Michael Jackson	Thomas King
Jean-Venable Goode	Patricia Harris	Josin James	Rosalyn King
Ken Goodman	Vincent & Kristen Hartzell	Forrest James	Mary Klein
	Robert Hartzell	Joseph Janela	Kristina Klein-Bradham

David & Deanne Knapp
Cynthia Knapp Dlugosz
Cynthia Koh-Knox
Tara Kompare
Raymond Kong
Aviva Koslowsky
Stacie Kramer
Mark Krueger
Suzan Kucukarslan
Julie Kuhle
Catherine Kuhn
Patty Kumbera
Camille Kundel
Renata Kuser
Patricia Kwok-Rudolph
Sandeep Lalli
Winnie Landis
Robin Lane Cooke
Amanda LaRocca
Roudabeh Latifpour
Lily Lau
Brian Lawson
Tenesita Lawson
Sarah Le
Sandra & Kresta Leal
David Lee
See Lee
Nicole Lehman
Debra Lembeck
Paul Leoni
Norman Leshan
Dominick Lettieri
R. Leung
A. Lewis
Paul Limberis
Colleen Lindholz

David Line
Peter Lo
Carol Ann Lobo Johnson
Roxanne Loncke
Richard Lopez-Soto
Elizabeth Louton
Laura Loyola
Natalie Lubinsky
Daniel Luce
Walter Ludwig
Ronald Lujan
Jennifer Luther
Eric Mack
Denise MacKenzie
George MacKinnon
Linda MacLean
Eddie Madden
Diana Majuta
Wanda Maldonado-Davila
Maria Maniscalco
Steven Mankofsky
Leslie & Mitchell Manor
Karna Mapes
Macary Marciniak
Keith Marciniak
Etella Marcovici
Arthur Margolis
Moir Maroney
Lawrence Martin
Bruce Martin
Kristi Martine
Bill Martinec
Scott Martinec
Thirsa Martinez
Michael Martz
Lindi Mayo

Martha Mazak
Jim McAuley
Sarah McBane
Joseph McClendon
Katrina Mccoy
Margaret McDougall
Sara McElroy
Robert McFalls
Robyn McGraw
Don McGuire
Helena McHenry
Tara McIntosh
Mary McKee
Cydney McQueen
Rebecca Meadows
Megan Medinger
Russell Melchert
Edgardo Mercadante
Jerome Merkel
Cynthia Meyers
Kyra Michalski
Linda Mick
Angela Mickalide
Thomas Middlebrooks
Ana Miladinovic
William Millar
William Miller
Bernard Miller
David Miller
Daril Miller
Kathryn Mims
Casey Miner
Howard Mirsky
Laurie Mitchell
Louis Mizelle, Jr.
Arnold Mochabo

Valerie Mongold
Priscilla Mooney
Anne Moorman
David Morgan
Ronald Mortus
Liseli Mulala-Simpson
Joseph Mulato
Dale Mundwiler
Reina Munsch
Thomas Munyer
Marilyn Murphree
Kelly Murray
Kunal Nagarsheth
Karen Nagel-Edwards
Milap Nahata
David Nau
Leslie Neatrou
Carmen Negron-Reed
George Nekos
Julie Nelson
Brigitte Nelson
Christine Ng
Jenny Nguyen
Joshua Niznik
Eucharía Nnadi
Dolores Nobles-Knight
Kam Nola
E.M. Nootens
Denise Norman
Craig Norman
Sven Normann
Davena Norris
Annalee Nystrom
Christan Nyweide

Mariam Odisho
Adeyoola Ogunkanmi
Sohee Oh
Nwamaka Okobi
Rosane Olyha
Marisel Onderick
Katherine O'Neal
Kathleen Overy
Jay Overy
Scott Paalhar
Debra Padgett
Nicole Pagano
John Pagano
Rosamond Pappy
Steven Pardi
Rod Patterson
Louis Pavloff
Mike Pavlovich
Kathleen Payne
Barbara Peck
Linda Pedersen
Kate Pellittieri
Michael Pentz
Lindsey Perez
Pat & Thomas Person
Geoffrey Pesanka
Shannon Peter
David Peters
Andrew Peterson
Vernon Peterson
Elizabeth Peterson
Lynn Pezzullo
John Pieper
Jen Pierpont

Adele Pietrantonio
Sharrel Pinto
Gina Pitz
David Poirier
Dana Pompey-Powell
Nicholas Popovich
Renee Popovich
Johnny Porter
L. Michael Posey
Patrick Potter
Cindy Proffitt
Foster Propst
Anthony Pudlo
Cindy Puffer
Robert Pump
Ghanshyam Purohit
Judeth Puyat
Ronald Pytel
Eugene Quaynor
Sarah Quigley
Guillermo Quiles
Darrell Raber
James Ramseth
Erin Raney
Carol Reagan
Jill Reinhardt
Camille Reliford
Zachary Renfro
Lois Reynolds
Garth Reynolds
Pamela Reynolds
Earl Rhoads
Jennifer Rhodes
Peter Rice
Margaret Rice

James Richards
Kelly Ridgway
Monica Rivera
Jason Rivera
Kimberly Robbins
Douglas Roberts
Shelby Roberts
Elizabeth Robertson
Daniel Robinson
Edward Roche
Jeff Rochon
Jen Rodis
Steven Rogers
Jeanne Rosati
Adrienne Rosen
Jon Roth
Michael Rothstein
Bertha Rueda
Andrea Rupniewski
Cynthia Russell
Melody Ryan
Kevin Rynn
Edward & Christine Saba
Felix Sablan
Masaru Saito
James Sakowski
Niki Salomon
Thomas Sanders
James Sanders
Steven Sandoz
Mojgan Sanepour Haji
John Sappe
Kimberly Sasser Croley
Robert Satterthwaite
Tom Sawyer

Cindy Schaller
David Schapiro
Nelle Schlomer
Valerie Schmidt Mondelli
Tyler Scholl
Lisa Scholz
John Schulte
Brian Schultz
Brandi Schuyler
Thomas Schwartz
Hal Schwarz
Diane Schwilke
James Scott
Diana Segawa
Joan Seif
Chandra Sekar
Nancy Selby
Jim Semchism
Louis Sesti
Mili Shah
Eric Shalita
Bruce Sharp
Caroline Shedlock
William Shely
Peggy Shih
Matthew Shimoda
Siok-Hiok Siau
Carmela Silvestri
Deborah Simmons
Alicia Simmons
Amanda Singery
Jaime Sirgany
Mark Skaar
Kim Sloca
Lori Slocum

Gary & Diane Smith	Richard Taffet	Peggy Van	Albert Wertheimer
Hana Smith	Catherine Taglieri	Paul Vanelsen	Karen Whalen
David Smith	Julie Tague	Marc Vaughan	Adam Wheeler
William Smith	Rachel Taira	Aleida Vazquez Campos	Jill White
Christi Smith	James Takakuwa	Albert Veid	Jillian Wilkes
Jenelle Sobotka	Takuji Tanaka	John Velk	Meghan Wilkosz
Harvey Sogoloff	Palmer Taylor	Rachel Venable	Karl Williams
Irina Solonenko	Ryan Templeton	Nancy Venetta	Judy Ann Williams
Judith Sommers Hanson	Thomas Tenhoeve	Veronica Vernon	Kaylan & Jeb Wilson
Todd Sorensen	Oksana Terleckyj	Stephen Vickers	Wilma Wong
Ralph Sorrell	Colleen Terriff	Cathrin Vietmeier	Roland Wood
Awilda Soto-Lorenzo	Lewis Tharp	Kristin Villa	Robert Wood
John Spain	Duann Thistlethwaite	Ralph Voigt	Thomas & Cathy Worrall
Michelle Spinnler	Charles Thomas	Jacqueline Volpe	Larry Wozencraft
Sherrill Spires	Jacqueline Thomas	Lai Fan Jennie Vong	Edward Wright
Rachelle Spiro	Stephen Thomas	Timothy Vordenbaumen	Ashleigh Wykle
Jessica Spitler	Jennifer Thomas	Cathy Vue	Natalie Yanos
Sheri Sponsler	Janet Thomas	Elizabeth Wade	Goldie Yavari
Sarah Stafford	Brent Thompson	Dawn Wagoner	Lindsay Yaworski
Megan Stanislaw	Bruce Thompson	Donna Waites	Jeanette Yingling
Sherri Stark	Jarrold Tippins	Jane Walther	Attaya Yokley
David Steeb	Margaret Tomecki	Larry Walther	Edward Yorty
Mark Stein	Kim Tran	Patricia Wanzer-Burgess	Sandra Young
Sean Stiffler	Deanna Tran	Ronald Ward	Andrew Young
Gary Stoehr	CoraLynn Trewet	Flynn Warren	Elizabeth Young
Samuel Stolpe	Herbert Tsuchiya	John Washburn	Elizabeth Yuan
Michael Stone	Carole Tucker	Fred Weaver	Allan Zaenger
Allison Strobel	Lexie Turner	Krystalyn Weaver	Monica Zatarski
Holly Strom	Jon Tuttle	Kathy Weaver	Gerd Zeiler
Stephen Strumello	Peter Tyczkowski	Wendy Weber	William Zipse
Linda Suchman	R. Unangst	Marlin Weekley	Steven Zona
H. Arthur Sugarman	Benjamin Urick	Lynda Welage	
Gretchen Sundquist	Maria Pamela Uy	Theresa Wells-Tolle	
John & Susan Sutter	Amy Valdez	Pamela Welton	
Jerald Sveum	Susan Valdivia	Janeen Wernecke	



In honor of our 60th Anniversary year, we introduced the 1953 Society, a group of donor leaders named after the year the Foundation was chartered. 1953 Society members identify with the long-term vision for success of the Foundation and commit to giving annually to support its mission. Contributions from the 1953 Society fund critical ongoing operations and provide an underpinning for future growth.

2013 INAUGURAL CLASS

Tery Baskin	Clark Gustafson	Daniel Luce	Gary & Diane Smith
Benjamin & Elaine Bluml	Harry Hagel	Lucinda Maine	Mindy Smith
Cynthia Boyle	Stuart & Seena Haines	Jonathan Marquess	Robert & Rebecca Snead
Deborah Brafford	Ed & Ann Hamilton	Denise McNerney	Jenelle Sobotka
Kelly Brock	Betty Jean Harris	Thomas Menighan	Dominic Solimando
Lawrence Brown	Starlin Haydon-Greatting	Marsha Millonig	Thomas Temple
Daniel Buffington	William Heath	Jimmy Mitchell	Karen Tracy
Laura Carpenter	Dennis Helling	Matthew & Marilyn Osterhaus	Timothy Tucker
W.G. Chambliss	Nicki Hilliard	Karen Reed	John & Joyce Vandel
Mark Cziraky	Jeff Jellin	Marily Rhudy	Eleanor Vogt &
David DeVido	Emery Johnson	William Riffie	James Kuperberg
Leonard Edloe	Elizabeth Johnson	Magaly Rodriguez de Bittner	Debra Weintraub
Mary Euler	Elizabeth Keyes	Mitch & Julie Rothholz	Pamela Whitmire
William & Sharon Fassett	Cynthia Knapp Dlugosz	Lynette Sappe-Watkins	May Woo
Robert & Linda Gibson	J. Bruce Laughrey	Steven & Wendy Simenson	Glenn Yokoyama



PHARMACISTS CARE!

Seeking to raise the profile of American Pharmacists Month, the Foundation kicked off a new initiative in October called Pharmacists Care. The campaign was an opportunity to make a visible statement on the significant impact pharmacists have on healthcare, while supporting the APhA Foundation's mission to improve patient health. During the week of October 21st, approximately 600 signs representing pharmacists from 42 states were displayed on the prominent lawn of APhA Headquarters. Some donors stepped forward to show their individual pride in the profession, while some recognized others who had been influential mentors. We look forward to continuing the success of the campaign in 2014.



Acting Surgeon General Rear Admiral Boris D. Lushniak, M.D., M.P.H., and Acting Deputy Surgeon General Rear Admiral Scott Giberson stopped by the morning of October 21 to applaud the Pharmacists Care campaign and pharmacists' role in improving healthcare. Also pictured: APhA EVP and CEO Tom Menighan, and APhA Foundation Executive Director Mindy Smith.

THANK YOU TO OUR 2013 PHARMACISTS CARE DONORS

Paul Ackerman
Jose Acosta
ACPHS-APhA ASP
Sondra Adkinson
Albany College of Pharmacy and
Health Services APhA-ASP
Nancy Alvarez
Don Anderson

Deborah Armstrong
RoseMarie Babbitt
Jeffrey Baldwin
Kevin Banwart
Carla Barber
Tery Baskin
Edward Bechtel
Marialice & Jon Bennett

Karen Bills
Benjamin Bluml
Boehringer Ingelheim Pharmaceuticals, Inc.
Michael Booth
Robert Bostanian
Cynthia Boyle
Deborah Brafford
Jeffery Bray

Kelly Brock
 Charles Broussard
 Lawrence Brown
 Mickie Brunner
 Dennis & Anna Bryan
 Daniel Buffington
 Carol Bugdalski-Stutrud
 Ryan Burke
 Anne Burns
 Robert Burton
 Andrew Bzowycyk
 Gerald Cable
 Peter Caldwell
 California Northstate University
 Norman & Mary Campbell
 Krista Capehart
 Nicholas Capote
 CARE Pharmacies Cooperative
 Carnegie Sargent's Pharmacy
 Michelle Carrasquillo
 Jason Cavalier
 Windy Christner
 Cindy Cocanower
 Antoinette Coe
 Michael Corbin
 Mark Cziraky
 Devra Dang
 Marie D'Angelo
 Pierre Del Prato
 Samantha DeLoache
 Ally Dering-Anderson
 Pearline Dillard
 Michel Disco
 Deborah Dunbar
 Fred Eckel
 Leonard Edloe
 William Ellis

Jeanne Erickson
 Martin Erickson
 Jeff Erwin
 Mary Euler
 Michelle Farrell
 William & Sharon Fassett
 Rogelio Fernandez
 Holly Filip
 Robin Findlay
 Steve Firman
 Steven Friedman
 Susan Fuller
 Conchetta Fulton
 Peggy Funk
 Dan Furtado
 John & Eileen Gans
 Louis & Kisha Gant
 Loni Garcia
 Vic Garman
 Jane Gartenhaus
 Georgia Pharmacy Association
 Joanne Giannopoulos
 Marsha Gilbreath
 Jean-Venable Goode
 Ken Goodman
 Thomas Goodrich
 Laura Gordon
 Jon Grether
 Caroline Griggs
 Donald Gronewold
 Mary Gurney
 Lamia Hachani
 Stuart & Seena Haines
 Ed & Ann Hamilton
 Vincent & Kristen Hartzell
 Starlin Haydon-Greatting
 Kirk Hayes

HCMC Pharmacy Team
 Dennis Helling
 Brenda Henderson
 Nicki Hilliard
 Rose Hilmara
 Julie Hixson-Wallace
 Thomas Hoey
 Vicky Hoggatt
 Michael & Heather Hogue
 Steven Hoskins
 Husson University - APhA ASP
 Michael Jackson
 Forrest James
 Joseph Janela
 Esther Jarvis
 Emery Johnson
 Michelle Johnson
 Thomas Kachurak
 Tana Kaefer
 Karen Kern
 Elizabeth Keyes
 Angel & Craig Kimble
 Rosalyn King
 Cynthia Koh-Knox
 Tara Kompare
 Julie Kuhle
 Catherine Kuhn
 Patty Kumbera (Outcomes MTM)
 Lake Erie College of Osteopathic Medi-
 cine APhA-ASP
 Robin Lane Cooke
 J. Bruce Laughrey
 Brian Lawson
 Cherokee Layson-Wolf
 Dominick Lettieri
 Richard Lopez-Soto
 Daniel Luce

Eugene & Susan Lutz	Mike Pavlovich	Allison Strobel
Diana Majuta	Kate Pellittieri	Richard Taffet
Wanda Maldonado-Davila	Pat & Thomas Person	Palmer Taylor
Steven Mankofsky	Katherine Petsos	Thomas Temple
Leslie & Mitchell Manor	Lynn Pezzullo	Tennessee Pharmacists Association
Keith Marciniak	Pharmacist's Letter Editorial Staff	Oksana Terleckyj
Jonathan Marquess	Jen Pierpont	Jennifer Thomas
Thirsa Martinez	L. Michael Posey	Brent Thompson
Maryland Pharmacists Association	Judeth Puyat	Bruce Thompson
Jim McAuley	Erin Raney	Norman Tomaka
Sarah McBane	Jill Reinhardt	Margaret Tomecki
Sara McElroy	Lois Reynolds	Karen Tracy
Robert McFalls	William Riffie	Deanna Tran
Don McGuire	Jeff Rochon	Herbert Tsuchiya
MCPHS University - Worcester	Jen Rodis	Timothy & Diane Tucker
Cydney McQueen	Magaly Rodriguez de Bittner	Uni. of St. Joseph
Thomas Menighan	Jon Roth	School of Pharmacy - ASP
Cynthia Meyers	Mitch & Julie Rothholz	University of Arizona APhA-ASP
Ana Miladinovic	Melody Ryan	University of Connecticut APhA-ASP
Bernard Miller	Sacramento Valley Pharmacists Assoc	University of Florida
David Miller	Samford University	College of Pharmacy, APhA-ASP
Marsha Millonig	Mojgan Sanepour Haji	University of Rhode Island APhA-ASP
Howard Mirsky	Lynette Sappe-Watkins	University of Tennessee APhA-ASP
Missouri Pharmacy Association	Kimberly Sasser Croley	Maria Pamela Uy
Arnold Mochabo	Diane Schwilke	Aleida Vazquez Campos
Valerie Mongold	Mili Shah	Veronica Vernon
Anne Moorman	William Shely	Eleanor Vogt & James Kuperberg
Reina Munsch	Steven & Wendy Simenson	Patricia Wanzer-Burgess
Thomas Munyer	Amanda Singery	Theresa Wells-Tolle
NEOMED COP Residency Program	Skaggs School of Pharmacy	Janeen Wernecke
Jenny Nguyen	Ronald Small	Karen Whalen
Joshua Niznik	Gary and Diane Smith	Pamela Whitmire
Dolores Nobles-Knight	Mindy Smith	Kaylan & Jeb Wilson
Kam Nola	Christi Smith	Roland Wood
Sven Normann	Robert & Rebecca Snead	Edward Yorty
Northeastern University APhA-ASP	Jenelle Sobotka	Monica Zatarski
Matthew and Marilyn Osterhaus	Jessica Spitler	Gerd Zeiler



Bowl of Hygeia Award Endowment

The Bowl of Hygeia Award recognizes pharmacists who have shown outstanding civic or social leadership in their communities. Since its introduction more than 50 years ago, the honor of being a Bowl of Hygeia recipient has been a career highlight for more than 3,000 pharmacists around the nation. It is considered one of the most prestigious awards in the profession.

The Foundation, in partnership with APhA and the National Association of State Pharmacy Associations (NASPA), is working to build an endowed fund to ensure the award program lives on in perpetuity. As premier supporter, Boehringer Ingelheim Pharmaceuticals, Inc. helps sustain annual operations of the long standing tradition of the Bowl of Hygeia while the endowment fundraising continues. Corporations and individuals have generously contributed towards the endowment of the bowl. Amgen, Pharmacists Mutual Companies and the U.S. Pharmacopeial Convention are contributors at the Ambassador level. State Pharmacy Associations have also played an active role in fundraising by encouraging their membership to support the effort. At the end of 2013, only \$115,000 remains until the endowment goal of \$600,000 is reached.



A GENEROUS CONTRIBUTION

Bowl of Hygeia recipients are passionate about the award and what it represents to them personally and to the profession of pharmacy. 2013 Kentucky recipient Leon Claywell demonstrated his passion for the sustainability of the award by announcing he will match contributions to the endowment from his fellow pharmacists in Kentucky up to \$4,000.

*Special thanks to Boehringer Ingelheim for
Premier Support of the 2013 Bowl of Hygeia program.*

2013 BOWL OF HYGEIA ENDOWMENT CONTRIBUTORS

Names in bold type are donors who made gifts or multi-year pledges to the Bowl of Hygeia Endowment in 2013.

Ambassadors Level (\$25,000 plus)	Marion Hoar	Steward Level (<\$1,000)	James Coast
Amgen	Mark Hobbs		Joseph Cross
Pharmacists Mutual Companies	Marshall Hollis	Kenneth Aday	Rebecca Culbertson
U.S. Pharmacopeial Convention	Gregory Hoyman	Robert Addison	Joe Dalton
	Lowell Irby	Alaska Pharmacists Association	David Darby
	Emery Johnson	Joseph Allegretti	James Davis
	Bruce Johnson	Howard Anderson	Joseph Dean
Principal Level (\$10,000 to \$24,999)	Russell Johnson	Roberta Armstrong	Gary Delander
Albert & Virginia Lockamy	T. Johnsrud	Fred Baillie	Jonathan Denslow
	Howard Juni	John Balch	Betty Derryberry
	Winnie Landis	Roger Ball	Donald Dickson
Attaché Level (\$5,000 to \$9,999)	Neil & Deanna Leikach	Belinda Ballard	Bob Dishman
Karen Reed	Eugene & Susan Lutz	John Beasley	Robert & Rita-Clare Doyle, Sr
Tennessee Pharmacists Research & Education Foundation	Eddie Madden	William Beasley	Leonard Edloe
	Thomas Menighan	James Beatty	Donald Ekdorn
	Jacob Miller	Joseph Bechtel	Donald Elliott
	Robert & Ann Osterhaus	Lance Berkowitz	Ida May Englehart
Leader Level (\$1,000 to \$4,999)	Katherine Petsos	William Bethmann	Patricia Epple
Benjamin Bluml	Julian Reynolds	Cassandra Beyerle	Christine Farnham
Cynthia Boyle	Michael Sanborn	Frances Blair	James Fenno
Larry Braden	Harvey Schmidt	James Bobo	William & Kathleen Ferri
Lawrence Brown	Nelson Showalter	Gary Boehler	Brian Fingerson
Bruce Clayton	David Smith	Samuel Brog	Steve Firman
Leon & Margaret Claywell	Robert Stessman	Anthony Brooklere	Murhl Flowers
Kenneth Couch	John & Susan Sutter	George Browning	John Forbes
Robert Duey	The Da Vinci Group	Buddy Bunch	Calvin Freedman
Fred Eckel	Theodore Tong	Heather Burney	Dennis Galluzzo
William Faccione	Joseph Valdez	Robert Burr	Steven Geoffroy
Julian & Betty Fincher	Timothy Vordenbaumen	Thomas & Alice Burris	Brian Gerth
Robert Greenwood	James Walker, Sr.	Donald Butsch	Linda Gore Martin
Donald Gronewold	Don Wall	Robert Bylone	Dwaine Green
Ed & Ann Hamilton	Flynn Warren	Lane Call	Ernest Gregg
Steven Hartwig	Theresa Wells-Tolle	Doug & Joan Campbell	John Grossomanides
Dennis Helling	Pamela Whitmire	Mario Casinelli	William Grosz
Fred Hirning	Donald Williams	Michele Catalano-Musheno	James Guidry
		Cayce's Pharmacy, Inc.	William Hadley
		Patricia Churchill	Rosemarie Halt

George Hammons	Melvin Lichtenfeld	Vernon Peterson	Stanley Susina
Mayer Handelman	Geraldine Liebert	Clifford Pfaff	R. Duane Tackitt
Lamar Hansen	Patricia Lind	James Powers	Theresa Talbott
John Harmon	Frank Lundrum	Charles Prickett	Ron Teasley
Janet Hart	Nasir Mahmood	William Rathburn	Robert Tandler
James Harter	James Main	Carroll Reagan	Bonnie Thom
D. Matt Hartwig	Ray Marcrom	Gary Reece	Lloyd Thomas
John Heaton	Richard Marshall	Roland Reznicek	Charles Thomas
Thomas Henig	Bruce Martin	Donald Riley	Jennifer Thomas
Robert & Ann Hennessy	Matthew & Aleshea Martin	Thomas Rivers	Jerry Thomas
J. Myrle Henry	Maryland Pharmacists	John Rosencrance	Miles Thomas
Ralph Heuerman	Association	J. Michael Ross	Heatwole Thomas
Thomas Hodel	Gordon Mayer	Frank Rubino	Stan Thompson
Paul Holly	Robert McFalls	Roy Sanderson	Patricia Thornbury
Arnold Honkofsky	Randy Meents	Lynette Sappe-Watkins	W. Ernest Turner
Sheila Hopper	Bernard Miller	Robert Scelfo	Evan Vickers
Brian Hose	Wayne Miller	David Schoech	Alan Vogenberg
Ron Hospoka	Fred Mills, Jr.	Robert Schreiber	Herbert Von Goerres
Tom Houchens	J. Scott Miskovsky	Dan Schreiner	Rita Waitzman
Carl Hudson	Jerry Moore	James Scruggs	Stanley Walczyk
Walter Hughes	Harvey Morgan	Ronald Seigla	Harlan Wand
Kirk Irby	Joseph Mosso	Lloyd Sellers	James Wang
Nicholas Ivans	Jack Mullins	Bruce Semingson	Jackson Ward
Barry Jacobs	Jacqueline Murphy	Charles Shannon	Charles Weart
Robert & Tina Johnson	John Navarra	Matthew Shimoda	Richard Weiss
Danny Johnson	Audrey Newton	Bruce Sigman	Anton Welder
Terry Johnson	Frank Nice	Frank Skinner	Ralph Wilkie
Patty Johnston	Ronald Nighswander	Richard Smiga	Horace Williams
Galen Jordre	Nyberg Pharmacy	Donald Smith	Wisconsin Pharmacists
Arnold Karig	George Oestreich	Kathleen Snella	Past Presidents Council
Douglas Kay	David Olig	Ralph Sorrell	Simon Wolf
Terry Kepka	Leman Olson	Geraldine Sowinski	Jim Wood
Elizabeth Keyes	Edward Osborne	Larry Stephens	Richard Yacino
Chris Killmeier	Harold Osteen	Stephens Pharmacy, Inc	Jeanette Yingling
Keith Kittinger	Fred Parkinson	Carol Stevenson	Glenn Yokoyama
Delmar Kramersmeier	Duane Parsons	Nestor Stewart	Jack Zweier
Larry Krasner	Dennis Pena	Paula Stover	
Terrance Kristensen	Jack Peters		
Mark Lapouraille			
David Leach			

2013 APhA Foundation Corporate Supporters

Amgen

BMS Foundation

Boehringer Ingelheim Pharmaceuticals, Inc.

CDC Division of Heart Disease and Stroke Prevention

G.W. Hoffman/Dannon

Gannett Foundation

Knowlton Foundation

McKesson/RxOwnership

MedImmune, LLC

Merck & Co., Inc.

Oncology Pharmacy Services, Inc.

PACE Alliance

Pfizer, Inc.

Sanofi-Aventis

*The APhA Foundation sincerely appreciates the
generous contributions of our corporate supporters.*

Activities at APhA2013

The APhA Foundation hosted several activities and receptions during the APhA Annual Meeting and Exposition in Los Angeles on March 1-4, 2013. The Foundation celebrated its 60th anniversary year by having a cake at the booth for all to enjoy.



The APhA Foundation hosted a **dessert reception** during APhA2013 to honor past and current recipients of the **Bowl of Hygieia Award**, one of the pharmacy profession's most prestigious honors recognizing pharmacists.

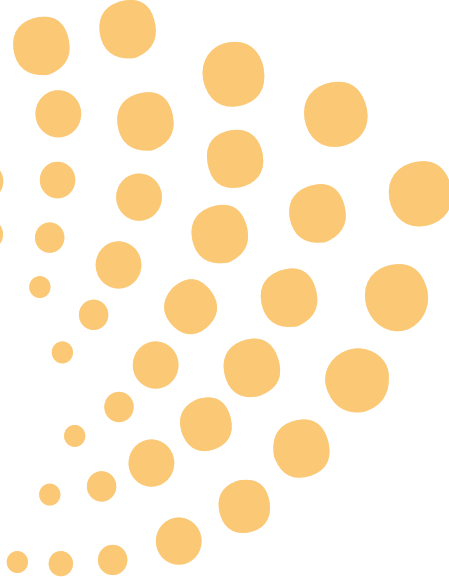


The **APhA Foundation and State Pharmacy Foundations Wine Tasting and Silent Auction** was a success at APhA2013. More than 260 people attended the event and contributions to the event doubled in comparison to the previous year. Proceeds from the live and silent auction items supported both the Foundation's mission through the PhilanthroSpheRxe fund and the state pharmacy association foundations.

The APhA Foundation recognizes its generous contributors, volunteer leaders, and student scholarship recipients at the **Annual Contributors' Breakfast**. The Jacob W. Miller Award is also presented, recognizing an individual who has advanced the mission of the APhA Foundation by demonstrating active involvement in the Foundation's programs, exemplary support in establishing and/or maintaining APhA Foundation initiatives or outstanding leadership in carrying out the mission of the APhA Foundation. The 2013 recipient selected by the APhA Foundation Board of Directors was John Gans, PharmD. Gans was recognized as a longtime Foundation contributor, and powerful advocate for the Foundation through his influence as the CEO of APhA.



John Gans and Dennis Helling



APhA Foundation 2013 Board of Directors

Daniel Luce, BSPHarm, RPh, MBA, FAPhA

President
Deerfield, IL

Laura Gordon

Vice President
Washington, DC

Mark Cziraky, PharmD, CLS, FAHA

Treasurer
Wilmington, DE

Thomas E. Menighan, BSPHarm, MBA, ScD (Hon), FAPhA

Secretary
Washington, DC

Nicholas Capote

Memphis, TN

Leonard Edloe, M. Div., PharmD

Mechanicsville, VA

Stuart Haines, PharmD, BCPS, BACP, BC-ADM*

Wellington, FL

Ed Hamilton, PharmD, FAPhA

Lake Alfred, FL

Dennis Helling, PharmD, DSc, FCCP, FASHP

Aurora, CO

Bruce Laughrey, BSPHarm,

Windermere, FL

Eugene Lutz, BSPHarm, FAPhA

Altoona, IA

Jan Scruggs**

Washington, DC

Thomas Temple, RPh, MS

Des Moines, IA

Eleanor Vogt, RPh, PharmD

San Francisco, CA

*SERVED BEGINNING SEPTEMBER 2013

**SERVED THROUGH SEPTEMBER 2013



APhA Foundation Staff



Mindy D. Smith, BSPHarm, RPh
Executive Director

Benjamin M. Bluml, BSPHarm, RPh
Senior Vice President of
Research and Innovation

Ryan Burke, PharmD
Executive Resident, 2013-14

Laurella Ganey
Director of Finance

Megan Lewis
Communications Manager

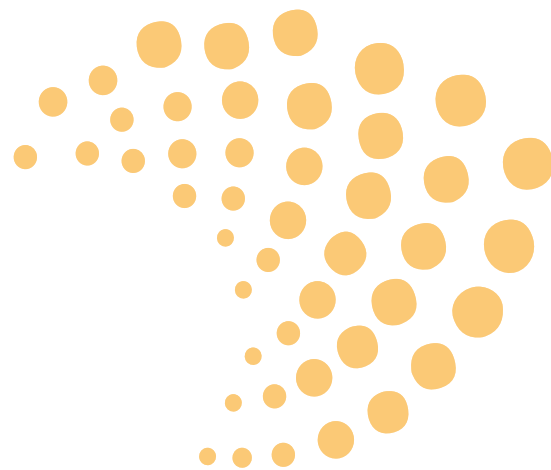
Marsha Millonig, MBA, BSPHarm
Practice-Based Research Director
(Contractor)

Lynette Sappe-Watkins, CFRE
Director of Development

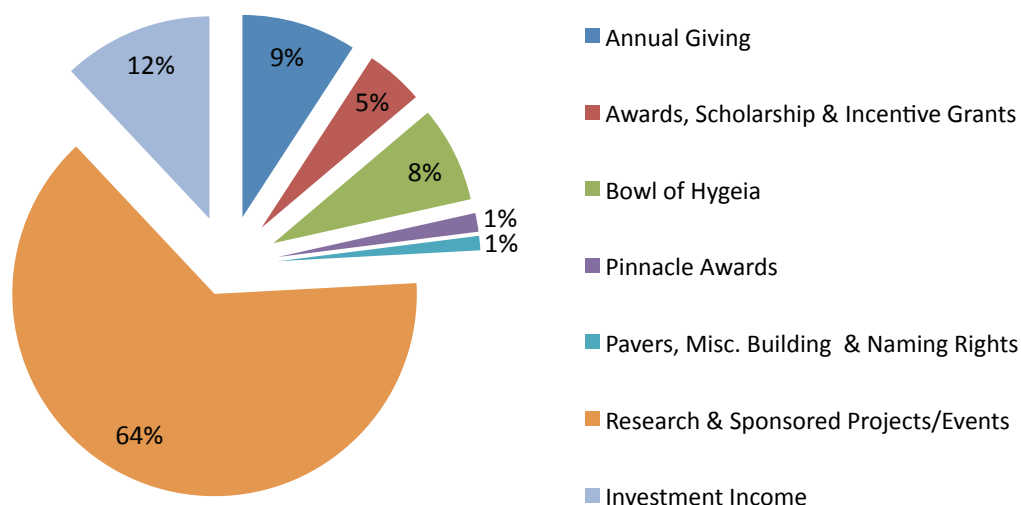
Caroline Shedlock
Administrative Manager and
Communications Associate

Alicia Simmons
Development Coordinator

Lindsay Watson, PharmD
Director of Applied Innovation



APHA FOUNDATION SUPPORT 2013



Annual Giving	9%	\$277,103.00
Awards, Scholarship & Incentive Grants	5%	\$140,264.00
Bowl of Hygeia	8%	\$231,971.00
Pinnacle Awards	1%	\$45,000.00
Pavers, Misc. Building & Naming Rights	1%	\$34,615.00
Research & Sponsored Projects/Events	64%	\$1,927,900.00
Investment Income	12%	\$362,021.00
		<u>\$3,018,874.00</u>

STATEMENT OF FINANCIAL POSITION*

	Year-End 2013	Year-End 2012
Total Assets	\$7,310,632	\$8,146,700
Total Liabilities	\$922,686	\$2,036,736
Unrestricted	\$3,280,494	\$3,275,566
Restricted	\$3,107,452	\$2,834,396
Total Net Assets	<u>\$6,387,946</u>	<u>\$6,109,962</u>
Total Liabilities & Net Assets	\$7,310,632	\$8,146,698

*Unaudited